

Eighteenmile Creek Niagara County, New York

Joseph C. Makarewicz and Matthew J. Nowak
The College at Brockport, State University of New York
January 2010

Eighteenmile Creek drains 93 mi² of land as it travels 26 miles before emptying into Lake Ontario. Topography is generally flat and comprised primarily of agricultural and rural residential development, with most of the industrial influences concentrated in the City of Lockport. The creek is a Great Lakes Area of Concern and has a Remedial Action Plan currently headed by the Niagara County Soil and Water Conservation District. PCBs, specifically, represent the area of stress that receives the most attention. In addition to a history of industrial waste exposure, the



Mouth of Eighteenmile Creek, Lake Ontario

Lockport Sewage Treatment Plant diverts treated sewage to the stream. Despite these water quality issues, Eighteenmile Creek is a popular fishing stream due to major salmon runs, while Olcott Harbor at the mouth of the river is the home of much of the Niagara County sport fishing industry. Nuisance algae, turbid waters, and algal mat development impact the drowned river mouth and the nearshore waters along the southern shoreline of Lake Ontario. This short report provides a synopsis of data collected monthly from May through September (2003 to 2009) on the water quality of Eighteenmile Creek and the

lakeside (swimmable depth) of Lake Ontario near the mouth of the creek.

Phosphorus is of concern as it stimulates the growth of plants, causing blooms of algae such as *Cladophora*. Total phosphorus (TP) levels in the lakeside waters (average=41.8±9.8 µg P/L, Fig. 1a) were lower than in creek water (average=124.7±12.3 µg P/L) indicating dilution with lake waters and perhaps uptake by algae. But clearly, the creek is impacting the nearshore waters of Lake Ontario. Both lakeside and creek phosphorus levels exceeded the NYSDEC ambient guideline of 20 µg P/L for phosphorus concentrations. Compared to TP concentrations in other Lake Ontario streams (83.8±7.0 µg P/L), average TP concentrations in Eighteenmile Creek (124.7±12.3 µg P/L) were higher, while the nearby lakeside waters (41.8±9.8 µg P/L) had lower concentrations than the average for lakeside Lake Ontario (62.0±7.4 µg P/L) (Table 1). As expected, both creek and lakeside TP concentrations were higher than in open (9.5±0.7 µg P/L) offshore waters of Lake Ontario (Table 1). No obvious annual trends from 2003 to 2009 were evident in TP, chlorophyll, total suspended solids (TSS, soil loss), and total Kjeldal nitrogen (TKN) (Figs. 1a, c, e, f). From 2003 to 2009, creek concentrations of soluble reactive phosphorus, phycocyanin, a pigment associated with blue-green algae, and nitrate appeared to be decreasing (Figs. 1b, d, f). Seasonally, lakeside TP, TSS (soil), TKN, and phycocyanin concentrations generally increased as the summer progressed (Fig. 2). Seasonal creek concentrations of TP and chlorophyll reached a peak in July before declining by September (Figs. 3a, c).

References

- Makarewicz, J.C. 2000. New York's North Coast: A Troubled Coastline. Lake Ontario Embayment Initiative. SUNY Brockport. Available from the Center for Environmental Information.
- Makarewicz, J.C., and T.W. Lewis. 2000. Nutrient and sediment loss from a Niagara County watershed, the East branch of Twelvemile Creek. Technical report to the Niagara County Soil and Water Conservation District, Lockport, NY.
- Makarewicz, J.C., and T.W. Lewis. 2002. Eighteenmile Creek remedial action plan: Area of concern plankton community study, Olcott Harbor at Eighteenmile Creek, New York. Technical report to the New York State Department of Environmental Conservation, Albany, NY.
- Makarewicz, J.C., and T.W. Lewis. 2003. Nutrient and sediment loss from a Niagara County watershed: An update of Twelvemile Creek East and a report on Twelvemile Creek West. Technical report to the Niagara County Soil and Water Conservation District. Lockport, NY.
- Makarewicz, J.C., T.W. Lewis, and D. White. 2006. Nutrient and soil losses from the Eighteenmile Creek watershed. Technical report to the Niagara County Soil and Water Conservation District. Lockport, NY.
- Makarewicz, J.C., T.W. Lewis, D.J. White, M. Seider, and V. Digiaco. 2008. Characterization and prioritization of the watersheds of Niagara County, New York. Technical report prepared for the Niagara County Soil and Water Conservation District, Lockport, NY.

Table 1. Average concentrations (2003 to 2009, May through September) and standard errors (S.E.) of total phosphorus (TP), soluble reactive phosphorus (SRP), nitrate, Chlorophyll a (Chl a), phycocyanin, total suspended solids (TSS), total Kjeldahl nitrogen (TKN), sodium, and silica.

	TP ($\mu\text{g P/L}$)		SRP ($\mu\text{g P/L}$)		Nitrate (mg/L)		Chlorophyll ($\mu\text{g/L}$)		Phycocyanin ($\mu\text{g/L}$)		TSS (mg/L)		TKN ($\mu\text{g/L}$)		Sodium (mg/L)		Silica (mg/L)	
	Mean	S.E.	Mean	S.E.	Mean	S.E.	Mean	S.E.	Mean	S.E.	Mean	S.E.	Mean	S.E.	Mean	S.E.	Mean	S.E.
Lakeside Rivers Embayments	62.0	7.4	7.0	0.9	0.27	0.01	19.1	4.1	17.8	2.2	33.5	4.8	795	96	13.78	0.19	0.56	0.06
	83.8	7.0	44.8	5.4	0.57	0.03	6.5	0.8	13.2	3.0	10.5	1.9	559	25	26.65	1.28	1.42	0.15
	129.7	59.6	15.5	2.0	0.14	0.01	20.0	2.4	237.5	207.6	17.0	5.70	923	70	27.47	1.49	1.29	0.11
Lake Ontario 30m	9.9	0.7	3.1	0.5	0.31	0.02	2.0	0.17	5.5	1.2	0.7	0.14	253.3	21.0	11.46	0.23	0.35	0.05
Lake Ontario 100m	9.5	0.7	5.2	2.1	0.31	0.01	2.6	0.26	6.1	1.3	0.8	0.12	343.4	50.9	11.45	0.24	0.40	0.07

Map of the “North Coast” of New York showing sampling locations for the Lake Ontario Coastal Initiative. Eighteenmile Creek watershed is shown in the insert.

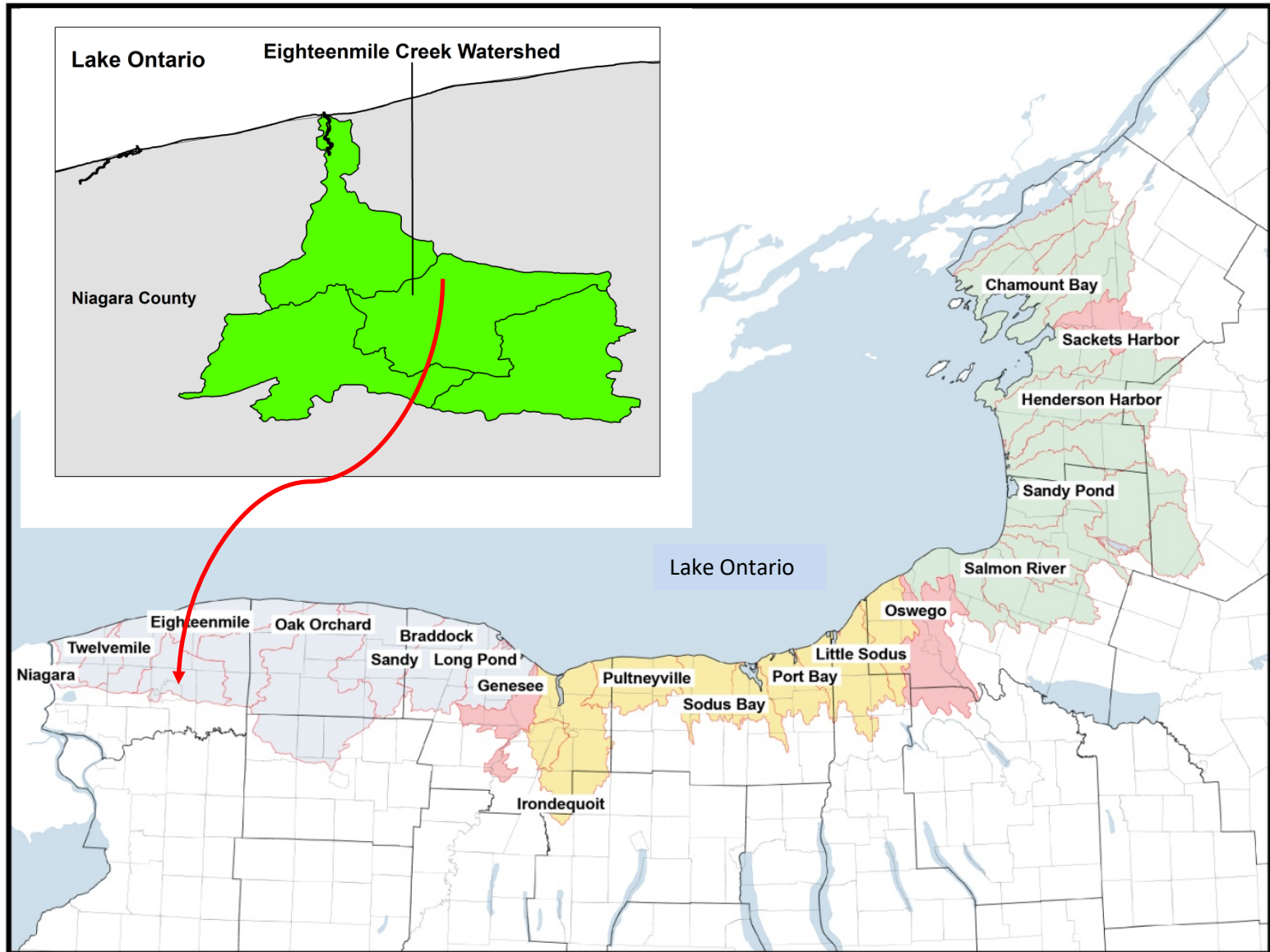


Figure 1. Average summer (\pm SE) total phosphorus, soluble reactive phosphorus, chlorophyll a, phycocyanin, total suspended solids, nitrate, and total Kjeldahl nitrogen concentrations in Eighteenmile Creek and near the mouth of the creek at the lakeside of Lake Ontario. Surface water samples were taken monthly (May-September) at a 1-meter depth.

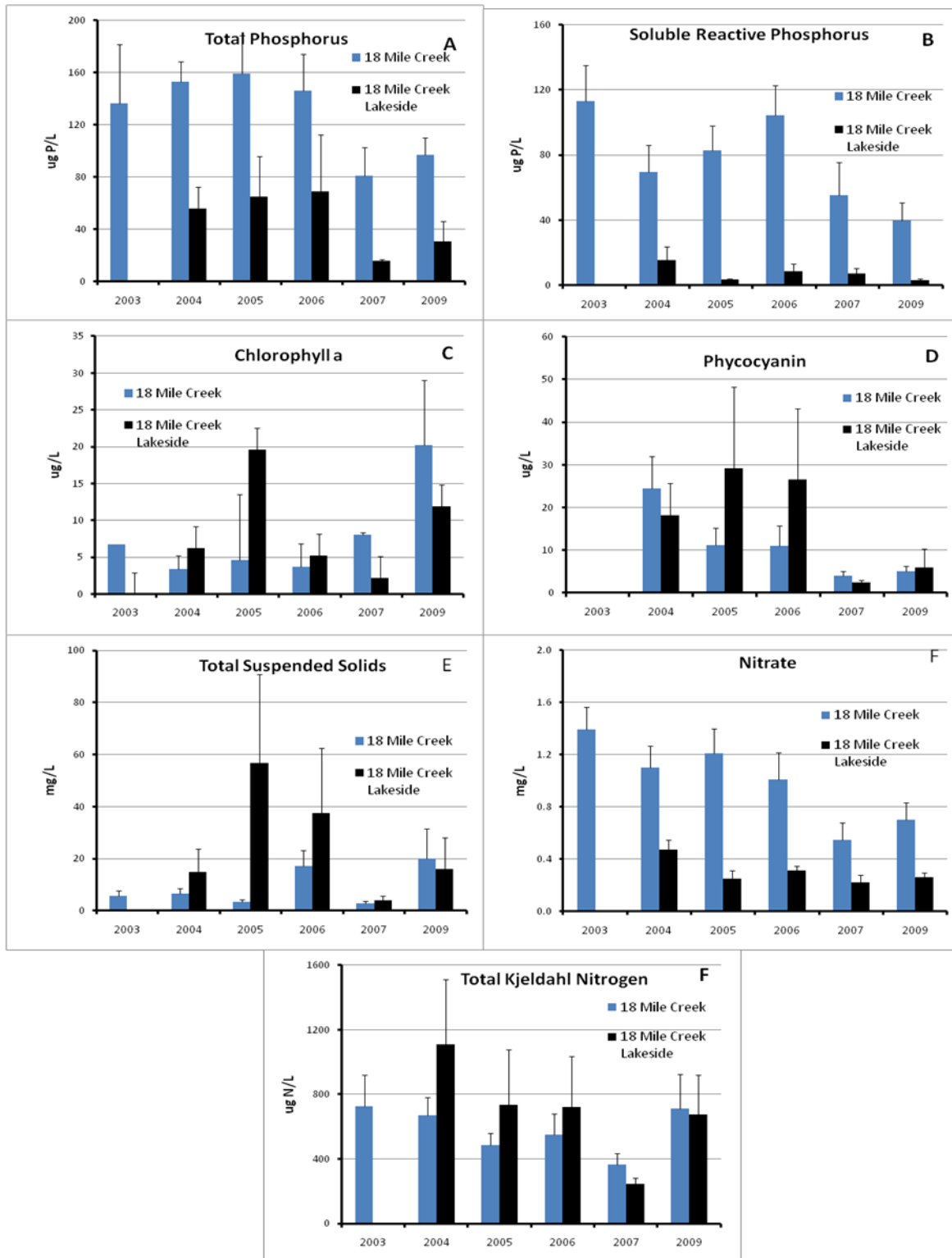


Figure 2. Average summer (\pm SE) concentrations of total phosphorus, soluble reactive phosphorus, chlorophyll a, phycocyanin, total suspended solids, nitrate, and total Kjeldahl nitrogen at the lakeside of Lake Ontario near Eighteenmile Creek.

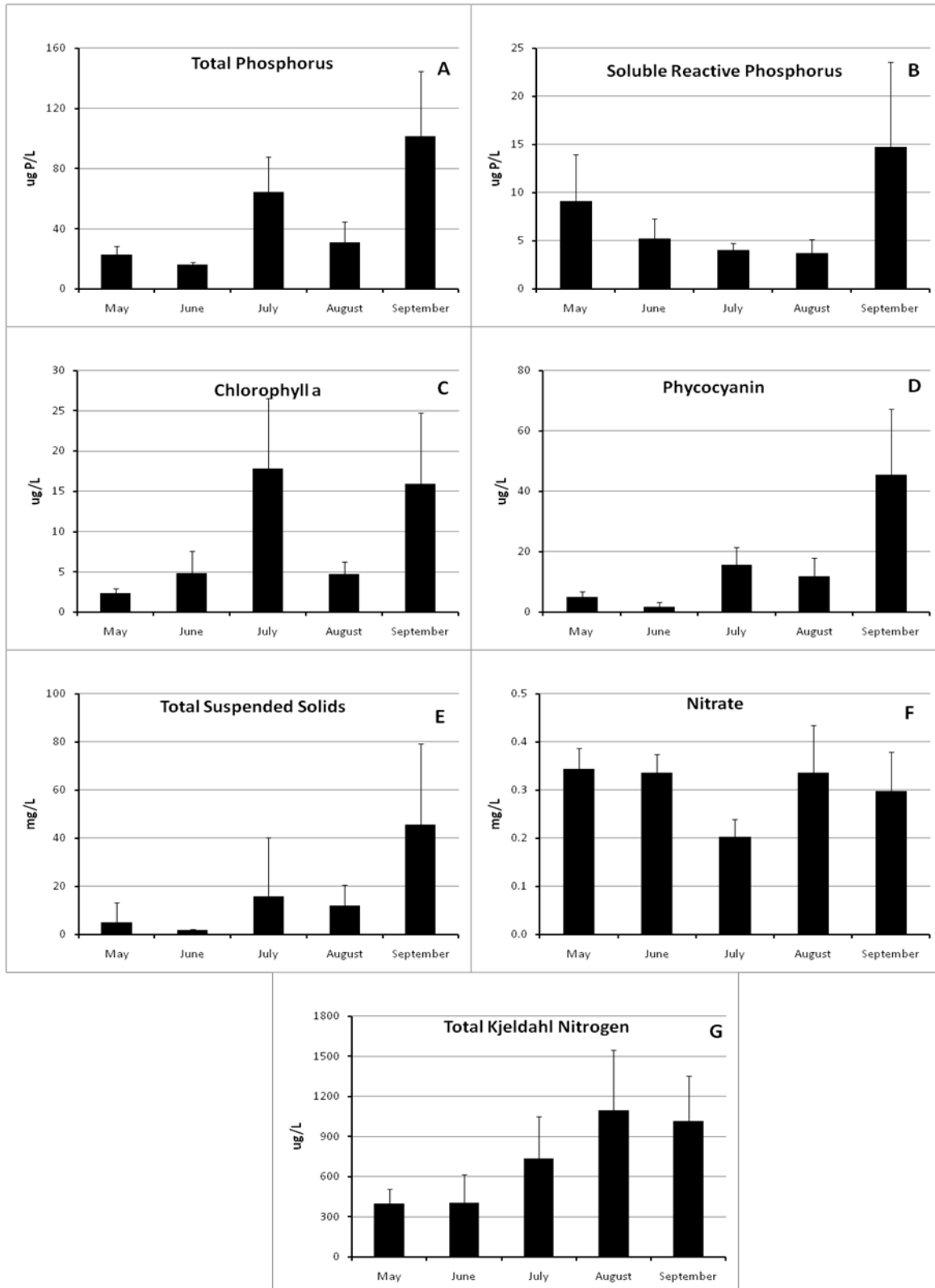


Figure 3. Average (\pm S.E) seasonal concentrations of total phosphorus, soluble reactive phosphorus, chlorophyll a, phycocyanin, total suspended solids, nitrate, and total Kjeldahl nitrogen in Eighteenmile Creek.

