

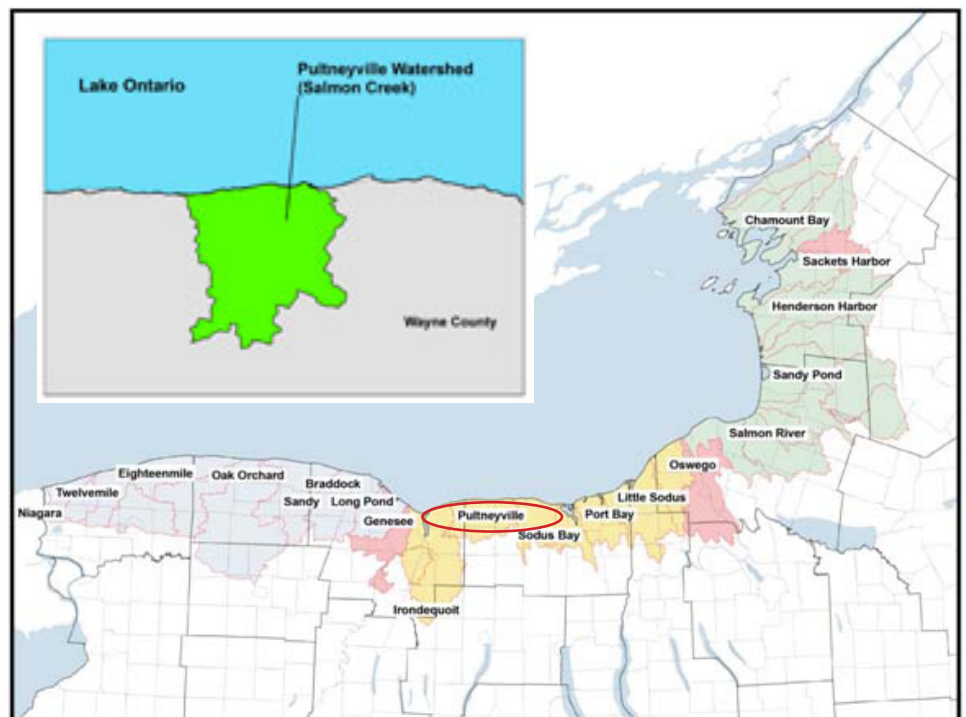
## Pultneyville, Salmon Creek Wayne County, New York

Pultneyville is located between Irondequoit Bay and Sodus Bay, approximately 14 miles east of Irondequoit Bay and 12 miles west of Sodus Bay. Salmon Creek drains into Lake Ontario at Pultneyville where it forms Pultneyville Harbor that boasts a 100-boat marina as well as a yacht club. Agriculture, specifically fruit orchards, dominates the harbor watershed. Little background information is available for this location. Here we report on water quality data collected monthly (May through September) in 2007 and 2009 at Pultneyville Harbor and at lakeside location east of the harbor in Lake Ontario.

In comparison to concentrations in other Lake Ontario rivers, bays, and offshore waters, total phosphorus concentrations were significantly higher.



*Pultneyville Harbor, New York*



*Map of Lake Ontario. Insert: Pultneyville, New York*

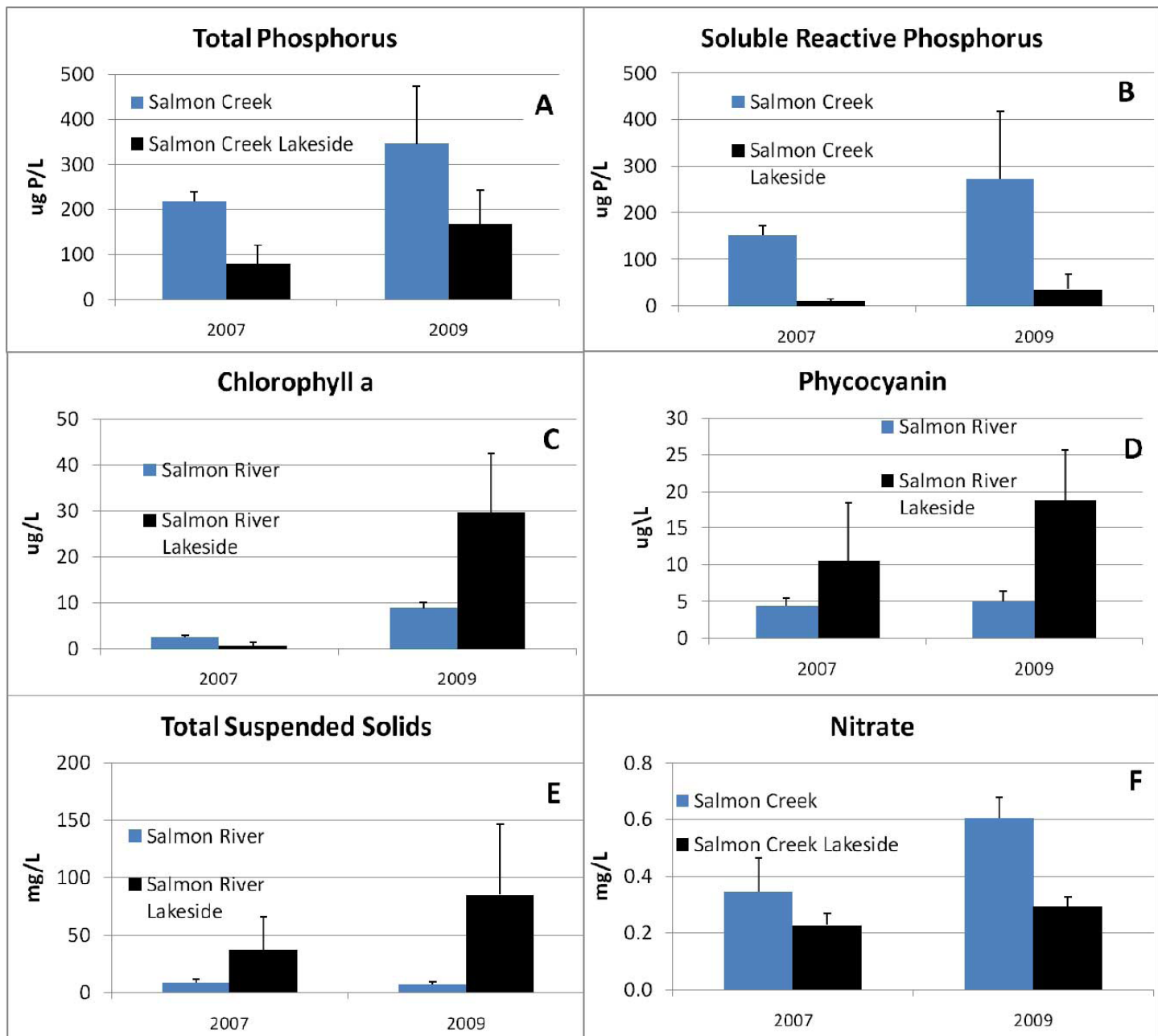


Figure 1. Average (+S.E) summer total phosphorus, soluble reactive phosphorus, chlorophyll a, phycocyanin, total suspended solids, nitrate, and total Kjeldahl nitrogen concentrations at the lakeside of Lake Ontario near Pultneyville Harbor and at Pultneyville Harbor. Surface waters samples were taken monthly (May-September) at a 1-meter depth.

