

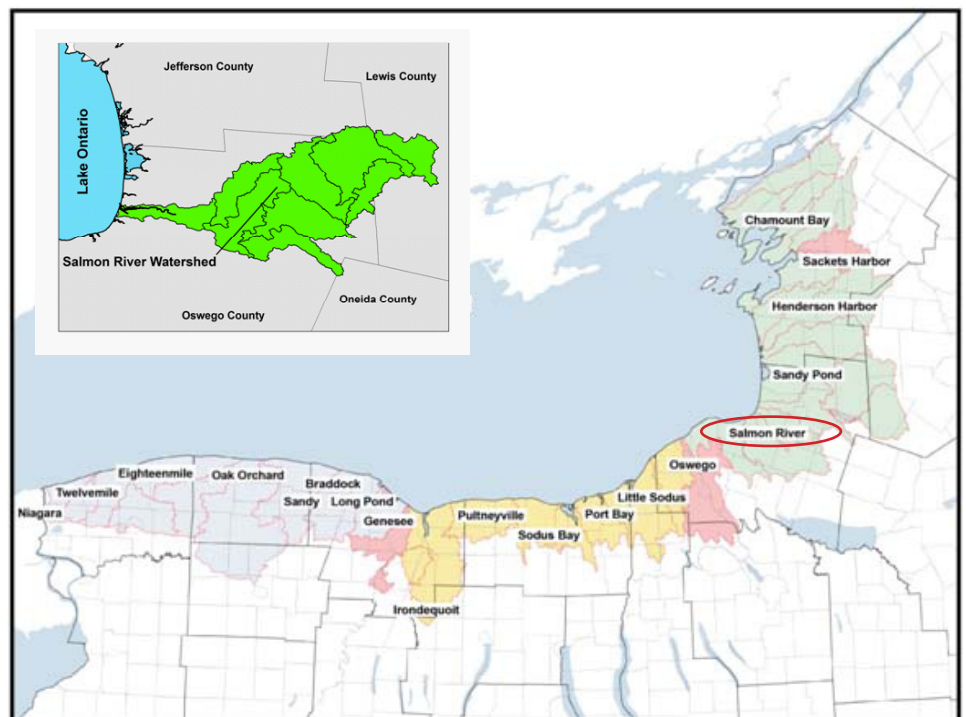
Salmon River Oswego County, New York

The Salmon River originates in the Tug Hill Plateau of New York State and flows through the Town of Pulaski before emptying into Lake Ontario. The river is dammed, forming the Salmon River Reservoir for hydroelectricity production near Little America, New York. The river has significant economic value attracting salmon anglers, as well as visitors to the nearby New York State Selkirk Shores Park. Historically, the Salmon River was populated by Atlantic salmon but has been replaced by stocked and wild Coho and Chinook salmon from the Salmon River Hatchery in Altmar, NY. This short report provides a synopsis of data collected monthly from May through September (2005 to 2009) on the water quality of the Salmon River and the lakeside (swimmable depth) of Lake Ontario near the river.

The river has significant economic value attracting salmon anglers, as well as visitors to the nearby New York State Selkirk Shores Park.



Salmon River, Lake Ontario



Map of Lake Ontario. Insert: Salmon River, Lake Ontario

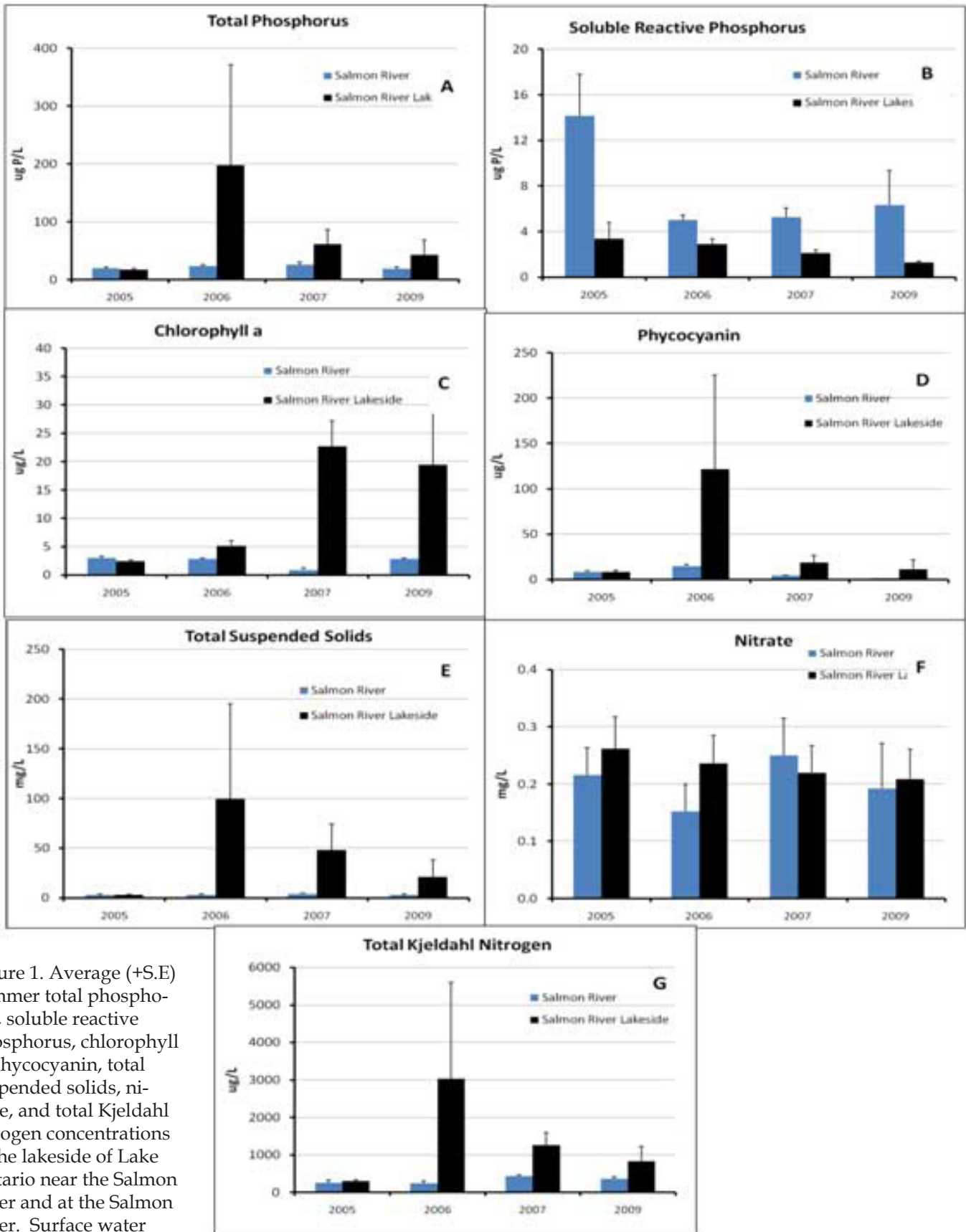


Figure 1. Average (+S.E) summer total phosphorus, soluble reactive phosphorus, chlorophyll a, phycocyanin, total suspended solids, nitrate, and total Kjeldahl nitrogen concentrations at the lakeside of Lake Ontario near the Salmon River and at the Salmon River. Surface water samples were taken monthly (May-September) at a 1-meter depth.