

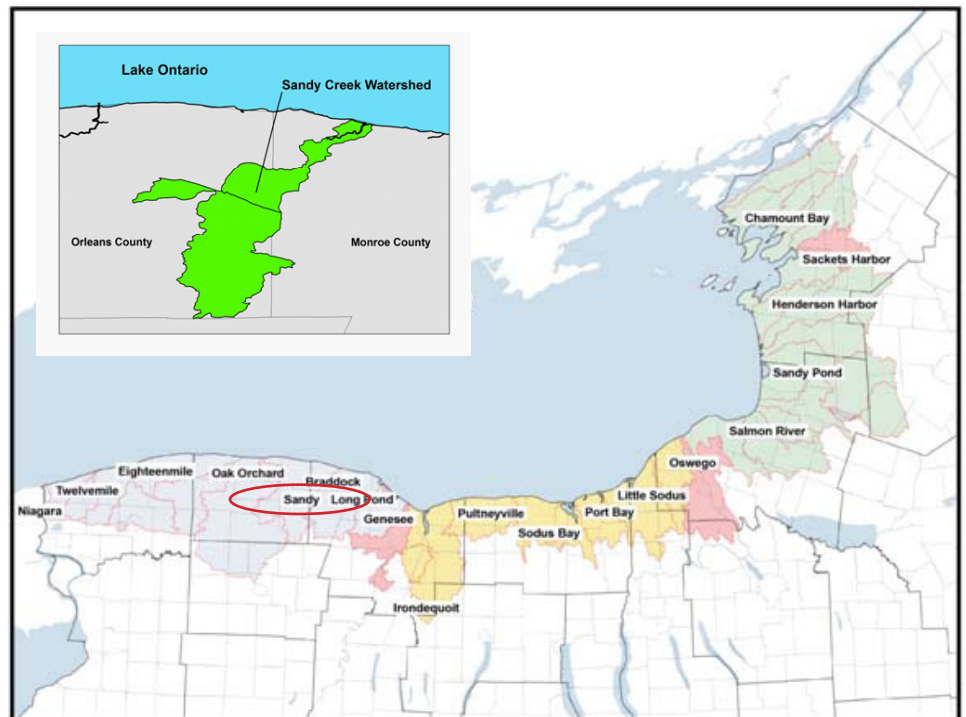
Sandy Creek Monroe/Orleans Counties, New York

Sandy Creek is located in Monroe and Orleans Counties in New York State and drains 89 mi² of land. Surrounding land use is predominantly agriculture, though there are also residential influences. The Orleans County Soil and Water Conservation District through the Water Quality Coordinating Committee (WQCC) has monitored nutrient loss from the watershed through continuous automated monitoring and event sampling. Sandy Creek was identified as moderately polluted, not as pristine as forested watersheds but not as polluted as streams receiving partially treated sewage. Soil loss was highest (75% of total) during precipitation events suggesting that agricultural runoff may play a large role in cultural eutrophication of the creek (Makarowicz 2000). Nuisance algae and algal mat development foul the nearshore waters along the southern shoreline of Lake Ontario and are major causes of beach closings and limited water recreation.

Sandy Creek was identified as moderately polluted, not as pristine as forested watersheds but not as polluted as streams receiving partially treated sewage.



Sandy Creek Plume



Map of Lake Ontario. Insert: Sandy Creek

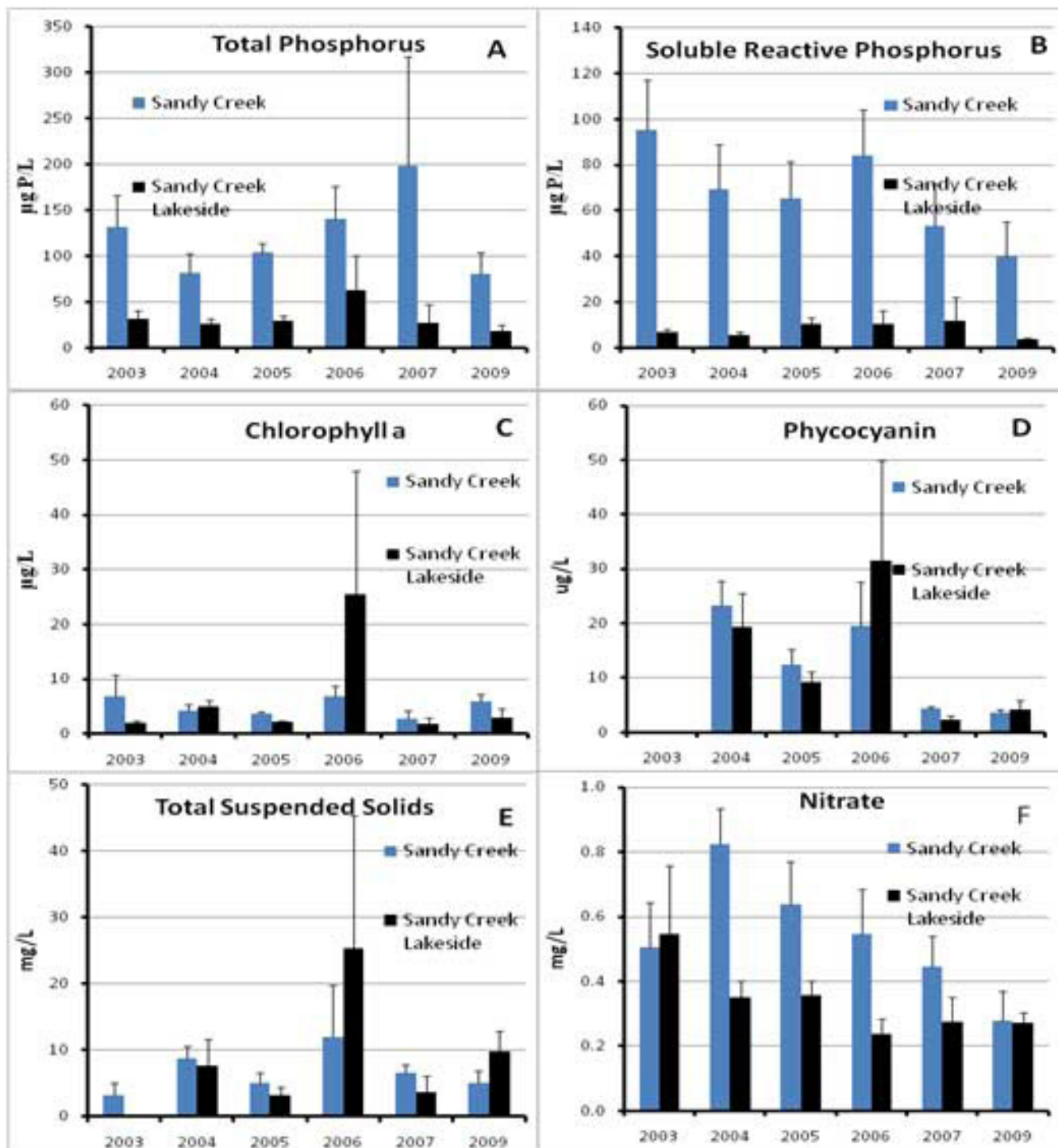


Figure 1. Average (+S.E) summer total phosphorus, soluble reactive phosphorus, chlorophyll a, phycocyanin, total suspended solids, nitrate, and total Kjeldahl nitrogen concentrations at the lakeside of Lake Ontario near Sandy Creek and Sandy Creek. Surface water samples were taken monthly (May through September) at a 1-meter depth.

