



Genesee Riverwatch 2024



western ny
wilds

Live Deliberately.



About me

- Originally a Geology Major
- Worked in Environmental and Civil Engineering firms
- Working in GIS and Planning at Allegany County for the last nearly 30 years
- Also oversee Tourism Promotion program for Allegany County for last few years
- Involved with Genesee River Wilds for 15 years
- Involved with the Southern Tier West Regional Planning Board, AC Landbank, Telecommunications, Open Space RAC, etc.

What did Earth look like years ago?



Paleozoic Era (541 million to 252 million years ago):

During the early Paleozoic era, the area that is now the Genesee Valley was covered by a shallow sea. Sediments accumulated over millions of years, forming layers of sedimentary rocks such as limestone, shale, and sandstone.

What did Earth look like 370 million years ago?



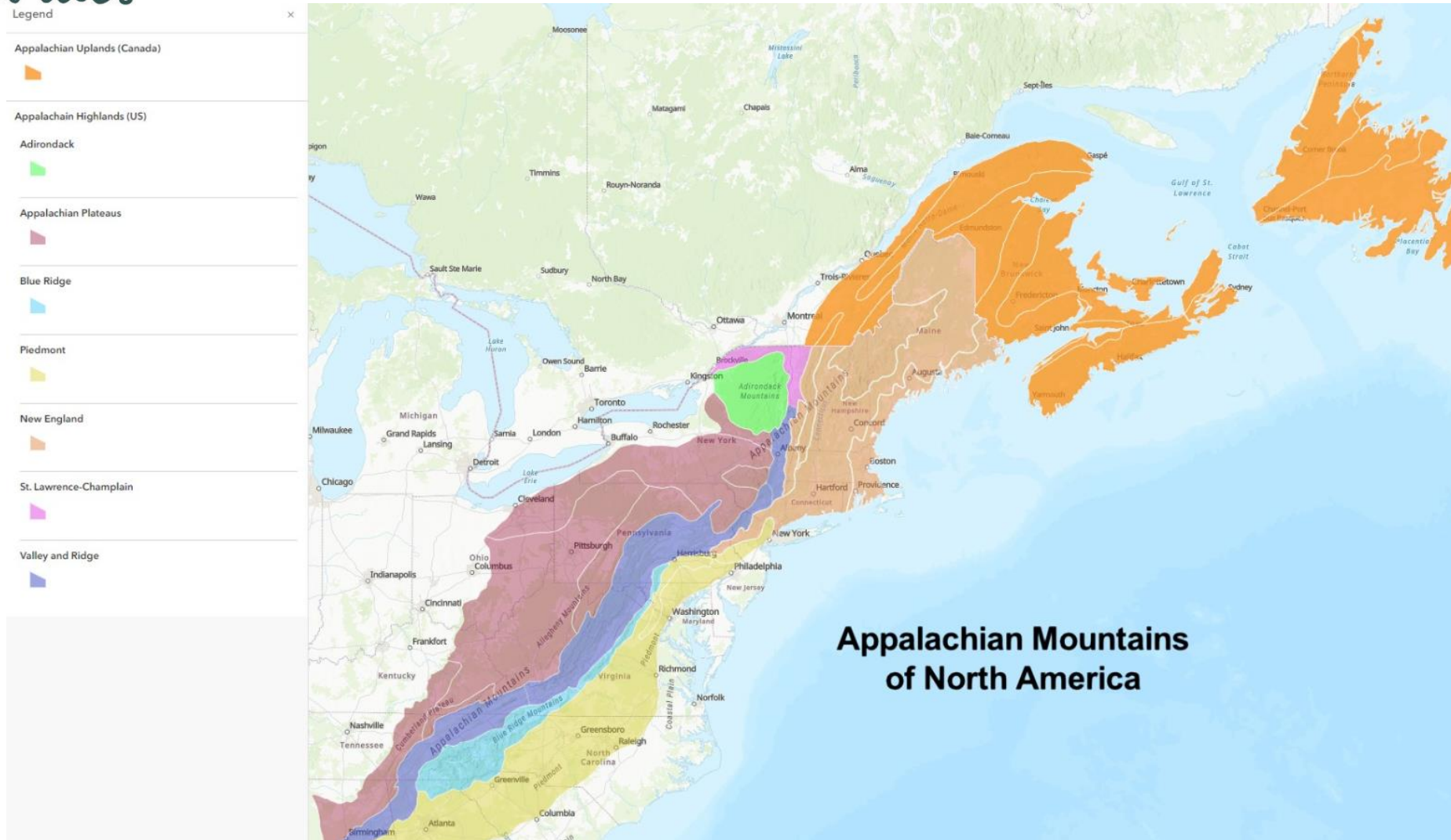
Devonian Period (419 million to 359 million years ago):

The Devonian period is particularly significant in the geological history of the Genesee Valley. This era is known for the deposition of significant amounts of limestone, which is visible in the valley's cliffs and gorges.



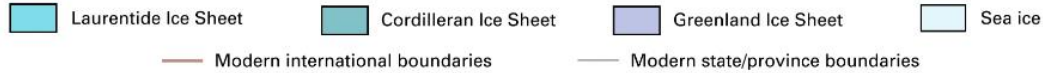
western ny
wilds

Genesee Valley Rock Geology Review



WISCONSIN GLACIATION

Approximately from 100,000 to 11,000 years ago

**Pleistocene Epoch (2.6 million to 11,700 years ago):**

- During the Pleistocene epoch, the region experienced multiple glacial advances and retreats.
- Glaciations shaped the landscape of the Genesee Valley, carving out deep valleys, gorges, and creating the Finger Lakes.

Holocene Epoch (11,700 years ago to present):

In more recent times, the Genesee Valley has undergone further modification due to erosion and sedimentation processes. The Genesee River continues to shape the valley, albeit at a slower pace compared to the glacial periods.





Genesee Valley near Fillmore





Wiscoy Falls





This section is going to connect how Natural Resources and Planning lead to Development in the Genesee Valley.



western ny
wilds

Basics of Planning and Development

In the beginning There was Land and Natural Resources



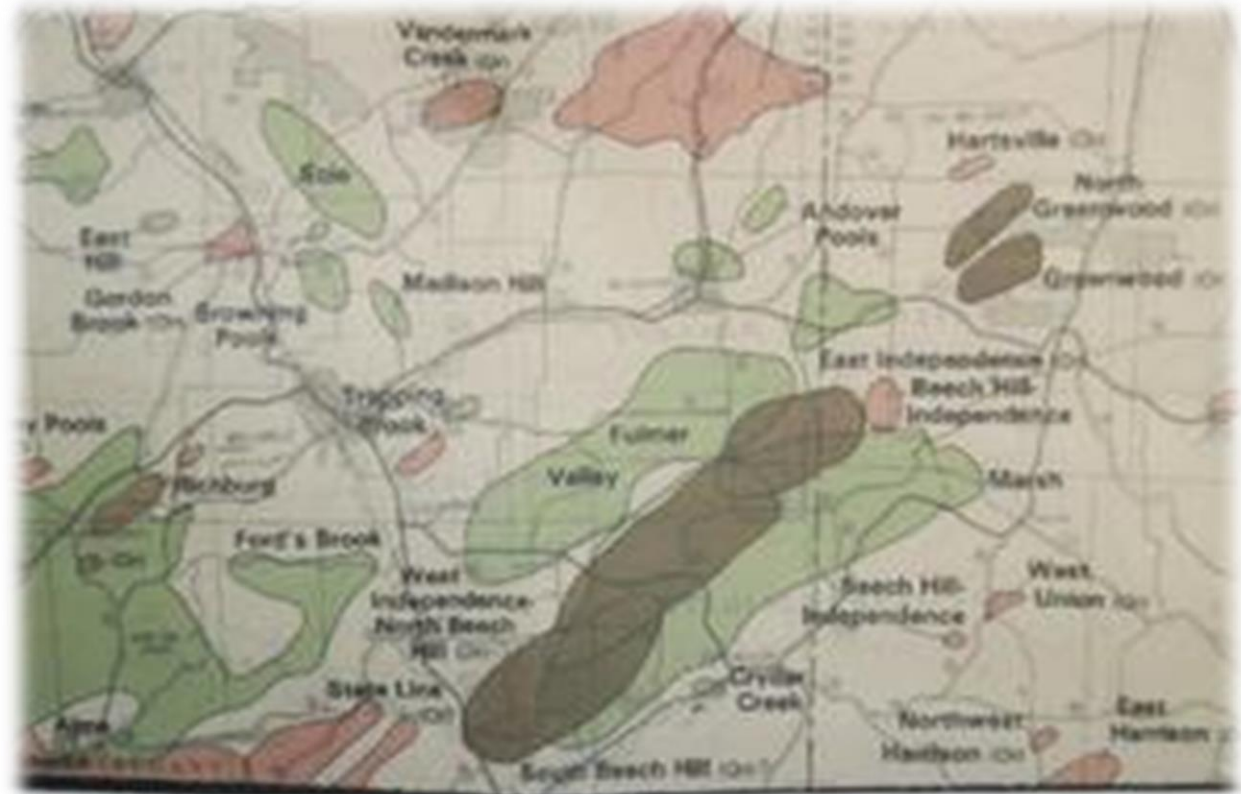
Forests



Animals



Oil & Gas



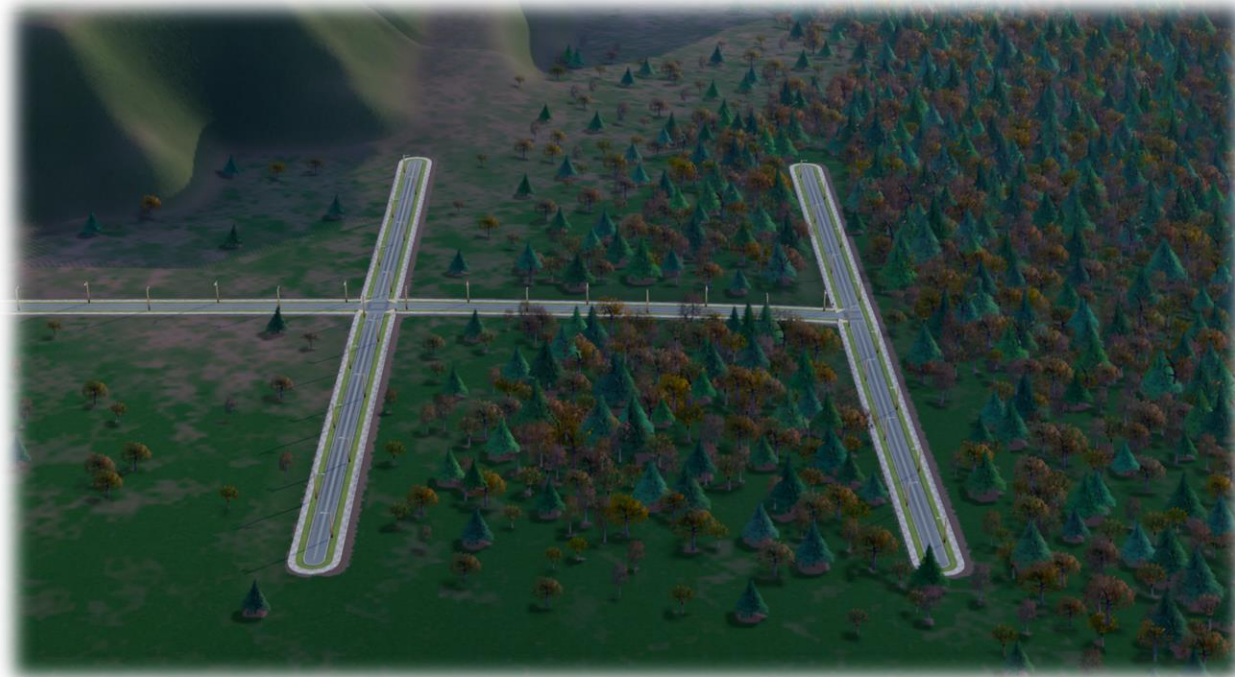
Clay & Gravel



Early Times to now

Basic Planning was done

- Resource Extraction Based Industries Started



Lumber



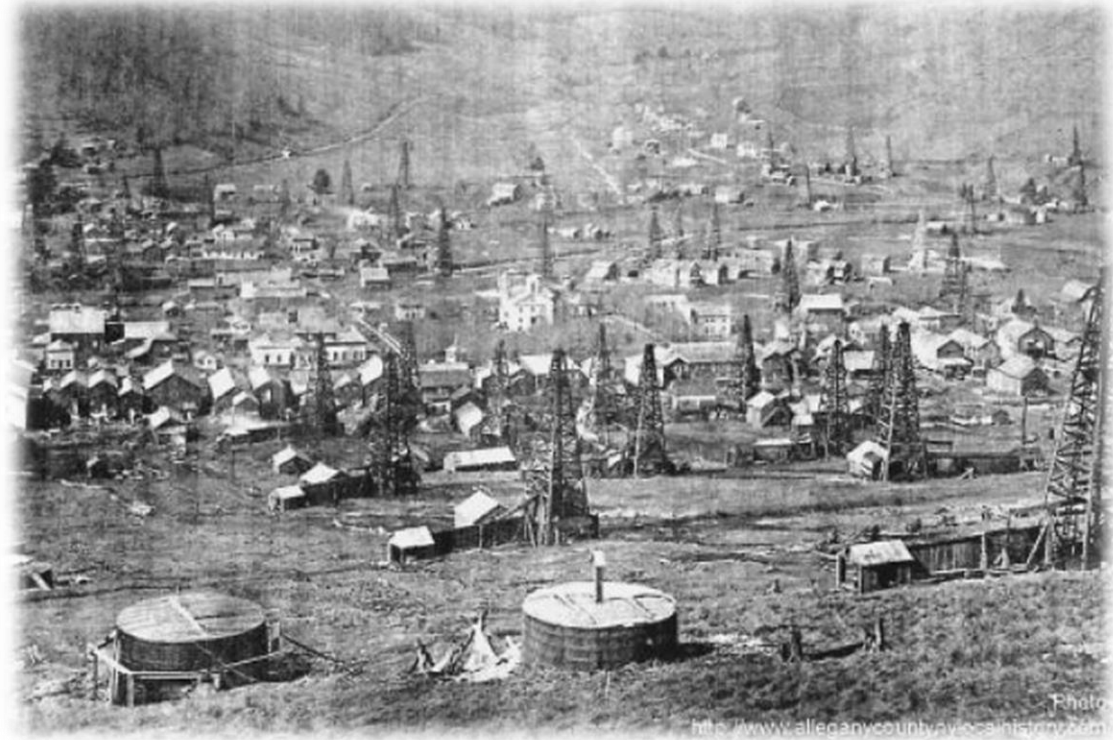
Trappers caught Beavers and other fur bearing animals



Farmers planted on the land and grew crops



Oil & Gas drilling





western ny
wilds

Basics of Planning and Development

Gravel & Clay was mined



Progression to today

Planning continues to work

- Added Value Resource Based Industry





Basics of Planning and Development

Turning Lumber into Boards and Furniture



Milk into Cheese and other goods



Refineries to convert crude into gasoline etc



Clay made into pottery and Ceramic tile



Sand & Gravel used for building roads and concrete block



Technology Based Manufacturing

**Machining raw materials
that are imported to local
facilities**



Creation of new products that are not so natural resource based



Creation and export of durable goods



Creation of Non-tangible goods – computer software

```
1 sub Calculator()  
2   sub addition(self, other)  
3     return self + other  
4   end  
5  
6   /** Create a list of 2 numbers. */  
7   sub makeFraction(numerator, denominator)  
8     return [numerator, denominator]  
9   end  
10  
11  /** Warning: Destroys original fraction! */  
12  sub multiplyFrac(frac, otherFrac)  
13    frac[0] *= otherFrac[0]  
14    frac[1] *= otherFrac[1]  
15    return frac  
16  end  
17 end  
18  
19 sub InfinityCalculator()  
20   inherit Calculator()  
21   /** Create a list of 2 numbers. */  
22   sub makeFraction(numerator, denominator)  
23     if denominator == 0  
24       /* The user is trying to divide by 0.  
25        * Use Java's way of handling this: */  
26       import math into mathematics  
27       return mathematics.INFINITY  
28     end  
29 end
```

Method

Class



Business NEEDS

- Materials – local or imported
- Infrastructure
 - Roads,
 - Railroads,
 - water,
 - sewer,
 - electric,
 - broadband

Business NEEDS Markets to sell goods





western ny
wilds

Basics of Planning and Development

Business NEEDS Trained or Trainable people

- Development of a workforce that has highly skilled capabilities and work ethic
- Educating people for careers



Business NEEDS people

People have NEEDS:

- House
- Food
- Health care
- Roads
- Infrastructure – water, sewer, electric, gas, communications
- Stores for basic goods
- Safety

People have **WANTS** too

Restaurants and
Bars



People have **WANTS** too

Store choices



NORTHERN LIGHTS CANDLES

WELLSVILLE, NY





Basics of Planning and Development

People have **WANTS** too

Recreation opportunities: hiking, kayaking, boating, sports, skiing, snowmobiles, ATV, golf



People have **WANTS** too

Entertainment

- Concerts,
Theater, Dance,
Movies

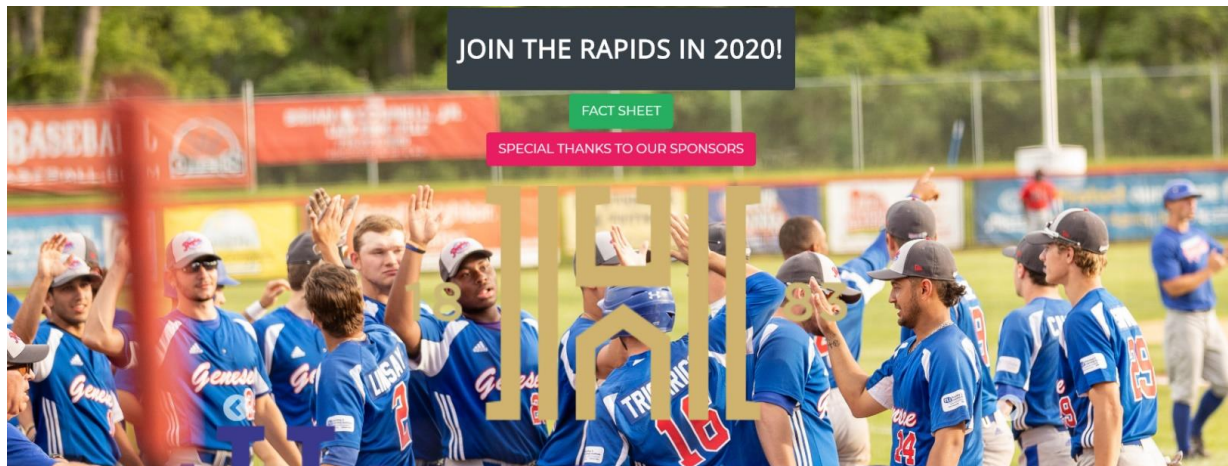




Basics of Planning and Development

People have **WANTS** too

Athletic Events





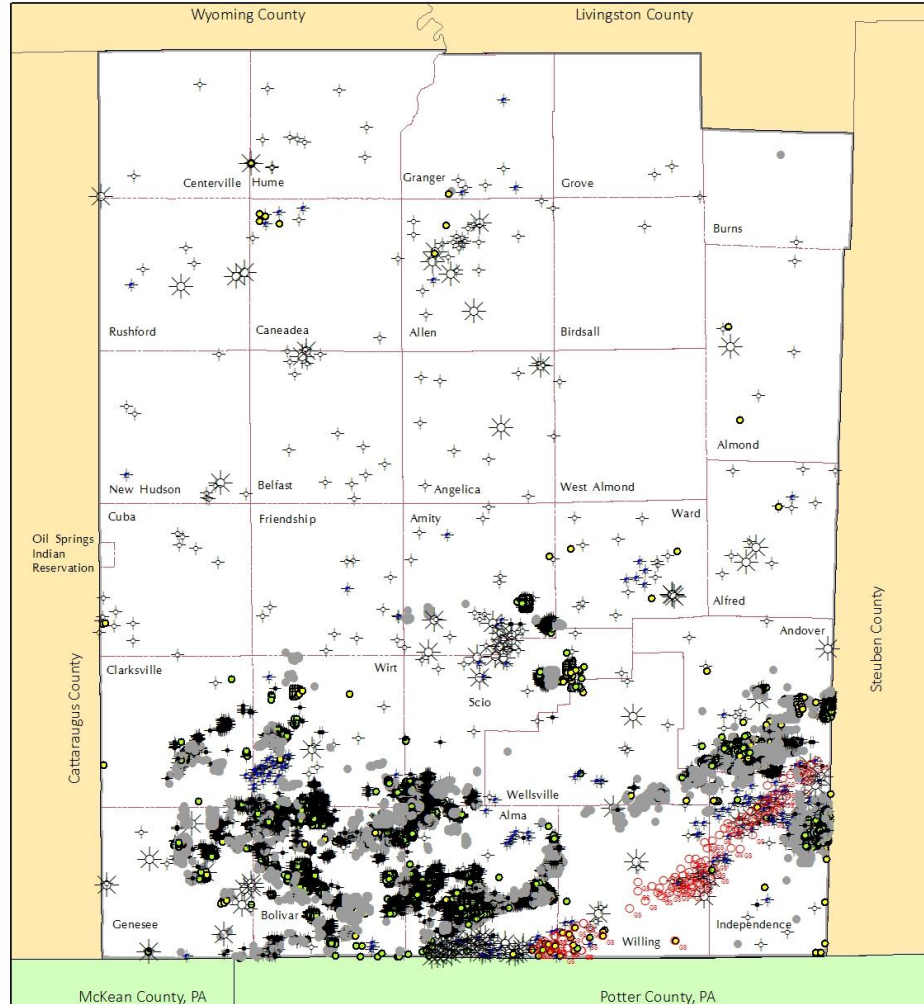
Basics of Planning and Development

These lead to thriving downtowns



Environmental Impacts 1800's & 1900's





- Legend:
- Gas Well
 - Dry Hole
 - Gas Well Plugged
 - Oil Well Plugged
 - Storage Well Plugged
 - Solution Brine Well
 - Other Well
 - Confidential

Mining Data from NYSDEC; few wells mapped in their data from prior to 1940s however many were drilled between 1870's and 1940's

DISCLAIMER OF USE:
This map is intended for planning purposes only. The County assumes no liability associated with the use or misuse of information contained herein.

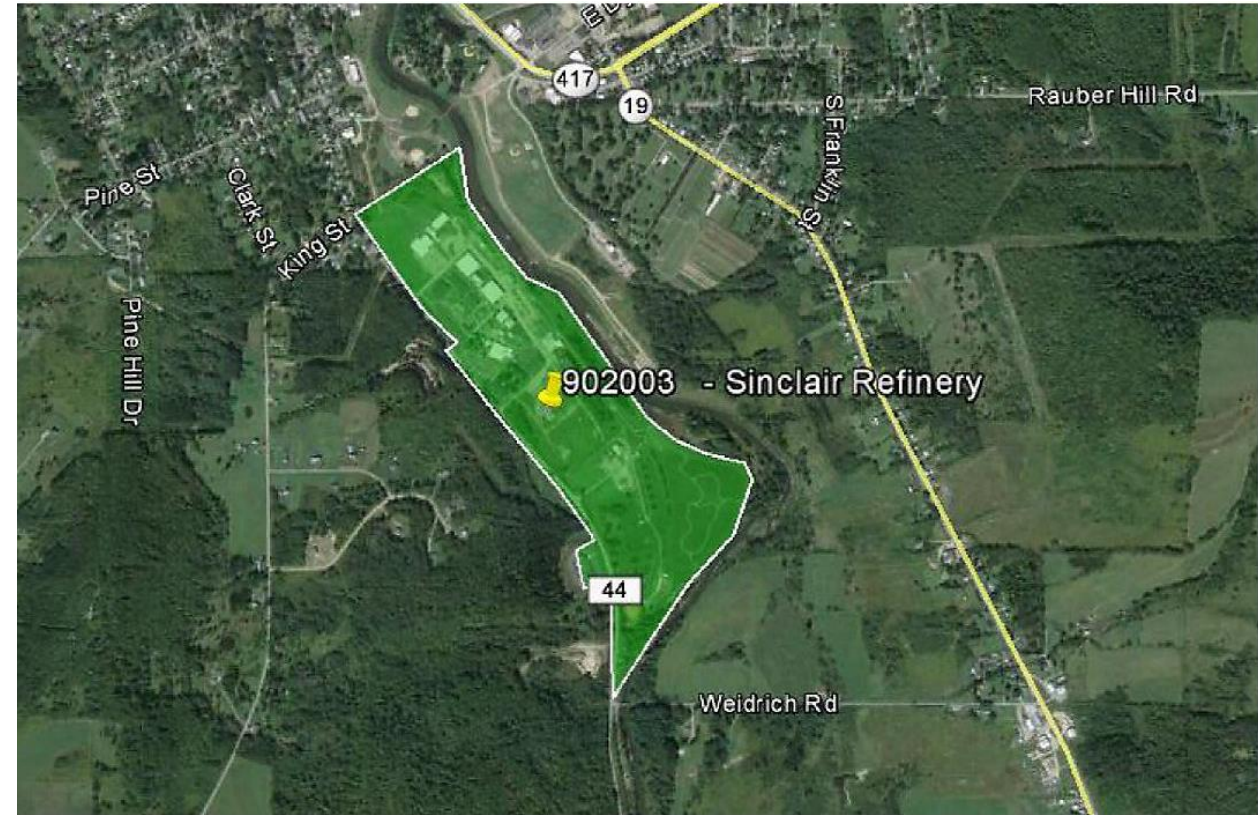
0 1 2 4 Miles



Alegany County
Comprehensive Plan
for more maps:
<http://www.alleganyplanning.com>

Oil Refinery

Sinclair Refining Co



Former Wellsville Oil Refinery Site No Longer A Significant Threat

BY DAN WELLS | WELLSVILLE
PUBLISHED 7:24 PM ET OCT. 06, 2015



Figure 3. Damage to the Jones Memorial Hospital on N. Main St. caused by Tropical Storm Agnes, June 1972.



western ny
wilds

Flood of 1972





western ny
wilds

Erosion







Recently Completed Projects

Completed Village of Angelica Comprehensive Plan 2020

Completed Town of Amity Comprehensive Plan 2023

Completed Town of Willing Comprehensive Plan 2023

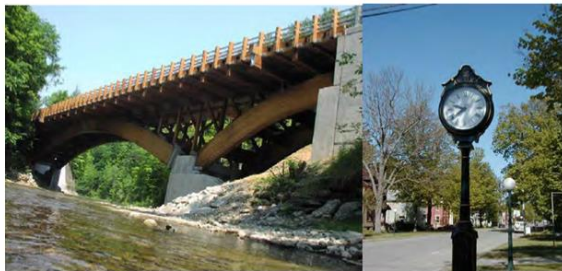
***Won Honorable Mention
Comprehensive Plan at
May WNY APA 2024***

COMPREHENSIVE PLAN
VILLAGE OF ANGELICA

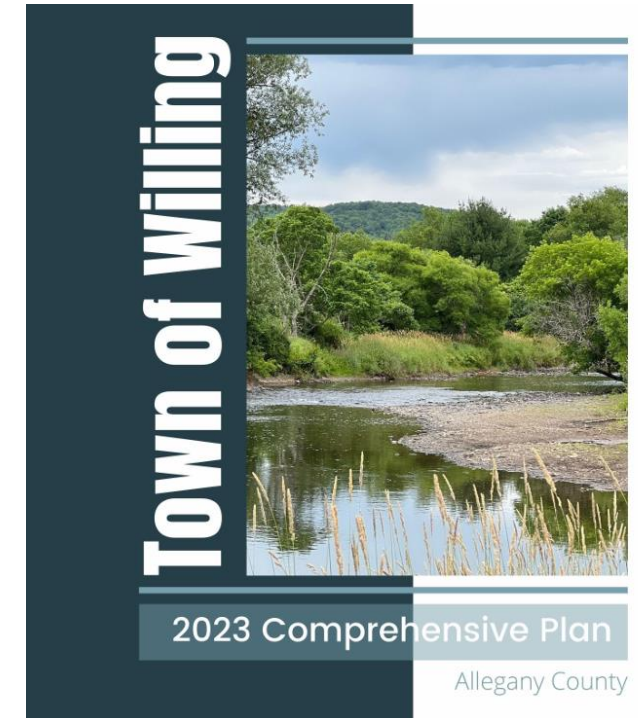
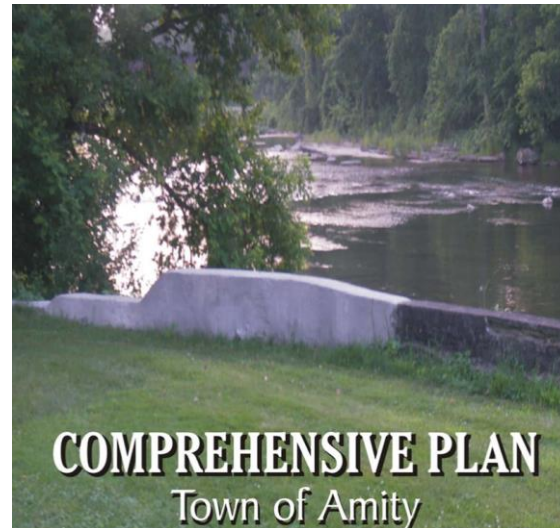
Prepared by:

The Board of:

Village of Angelica
Village Office
21 Peacock Hill Road
Angelica, New York 14709



Approved - February 18, 2020





Current and Future Projects

Updating the Town of Hume's 2010 Comprehensive Plan

Town of Hume
2010 Comprehensive Plan

Plan Adopted on December 15, 2010

Town of Hume
20 North Genesee Street
Fillmore, New York 14735-0302



Current and Future Projects

Updating the Town and Village of Wellsville's 2017 Comprehensive Plan

PLAN WELLSVILLE
A Comprehensive Plan for the Future
Village and Town of Wellsville, NY

2017

Allegany COUNTY
www.alleganycounty.com

The complex block contains a collage of images. The main image is a street scene in Wellsville, NY, showing colorful brick buildings, traffic lights, and signs for "TWIN-2", "TEXAS HOT", "New Vegas", "The Local GEM", and "CREATIVE ARTS CENTER". To the right, there are three smaller images: a hot air balloon over a landscape, a golf course with a winding river, and a school building with a walkway. The year "2017" is printed in orange at the bottom left of the collage. The Allegany County logo and website are at the bottom right.

Creating the First Comprehensive Plan for the Town of Belfast



Southern Genesee River LWRP

What is an LWRP?

A **Local Waterfront Revitalization Program** is a locally prepared land and water use plan for a community's developed, natural, public, and/or working waterfronts. It provides a comprehensive framework within which a community's vision for its waterfront can be formalized. Working in partnership with the Department of State, a community reaches consensus on the future of its waterfront, establishes local policies and outlines the implementation techniques it will use to achieve its vision.

Benefits of an Approved LWRP:

- Presents a unified vision for the waterfront
- Helps governments work together to improve the economy and environment
- Identifies future projects, land and water uses
- Establishes long-term partnership among local governments, community organizations and the State
- Increases a community's chances to obtain funding for local projects

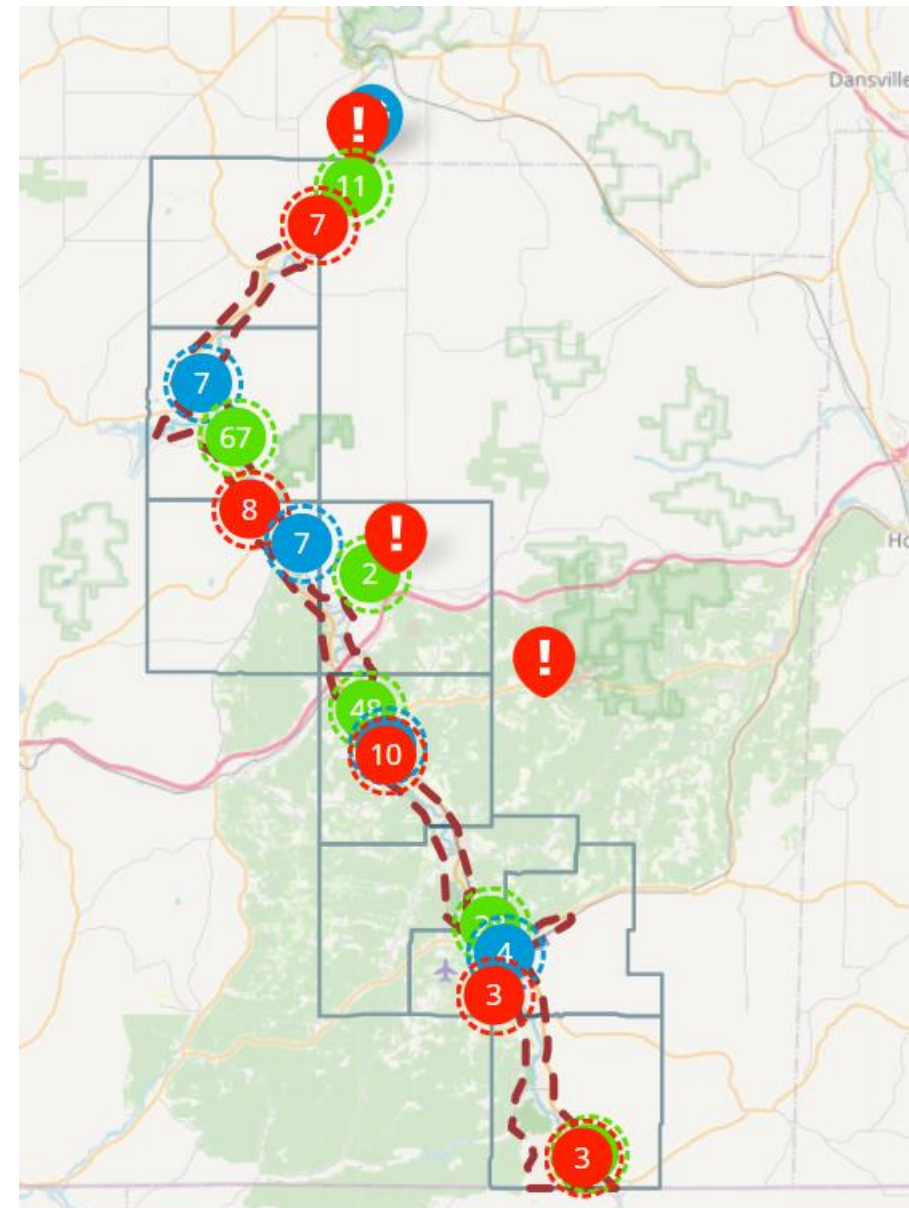




Current and Future Projects

Southern Genesee Local Waterfront Revitalization Plan

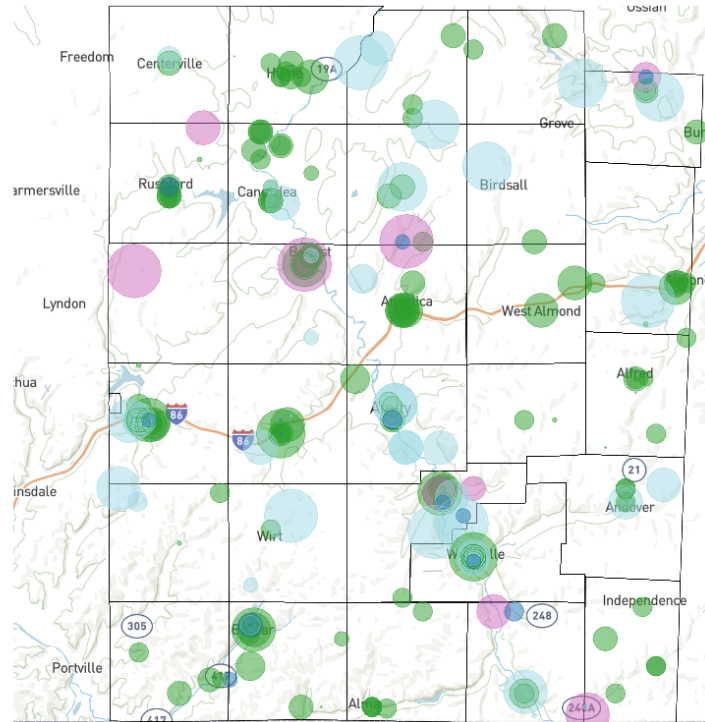
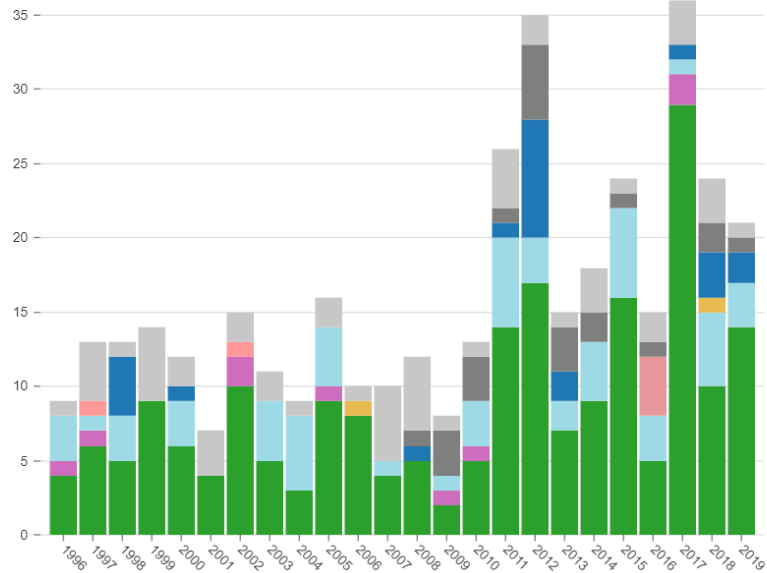
- PA Border nearly to Letchworth SP.
- 8 Towns and 10 Villages
- V. Wellsville (Administrator/Applicant)
- T. Willing, T. Wellsville, T. Scio, T. Amity, V. Belmont, T. Angelica, T. Belfast, T. Caneadea, T. Hume
- Currently NYS is reviewing (for years!)



Allegany County Hazard Mitigation Plan Update

Allegany County Hazard Events

Hazard Events Number of Events by Hazard Type (1996-2017)





Current and Future Projects

- 2024 Hazard Mitigation Plan for Allegany County
- Vulnerability Results:

Belfast (T):
(20)

Strong Wind (32), Flooding (21), Winter Weather

The Town of Belfast does not experience any hazards unique to Allegany County and is not at a particularly elevated risk for any hazards. When compared to hazard scoring for all of Allegany County, the Town of Belfast scored lower than the County for the following hazards:

- Hail (County Score: 9; Town of Belfast Score: 3)
- Heat Wave (County Score: 3; Town of Belfast Score: 2)
- Landslide (County Score: 4; Town of Belfast Score: 2)
- Lightning (County Score: 12; Town of Belfast Score: 4)
- Riverine Flooding (County Score: 28; Town of Belfast Score: 21)
- Tornado (County Score: 24; Town of Belfast Score: 8)

Complete



Current and Future Projects

Table 2 - Allegany County Hazard Scoring

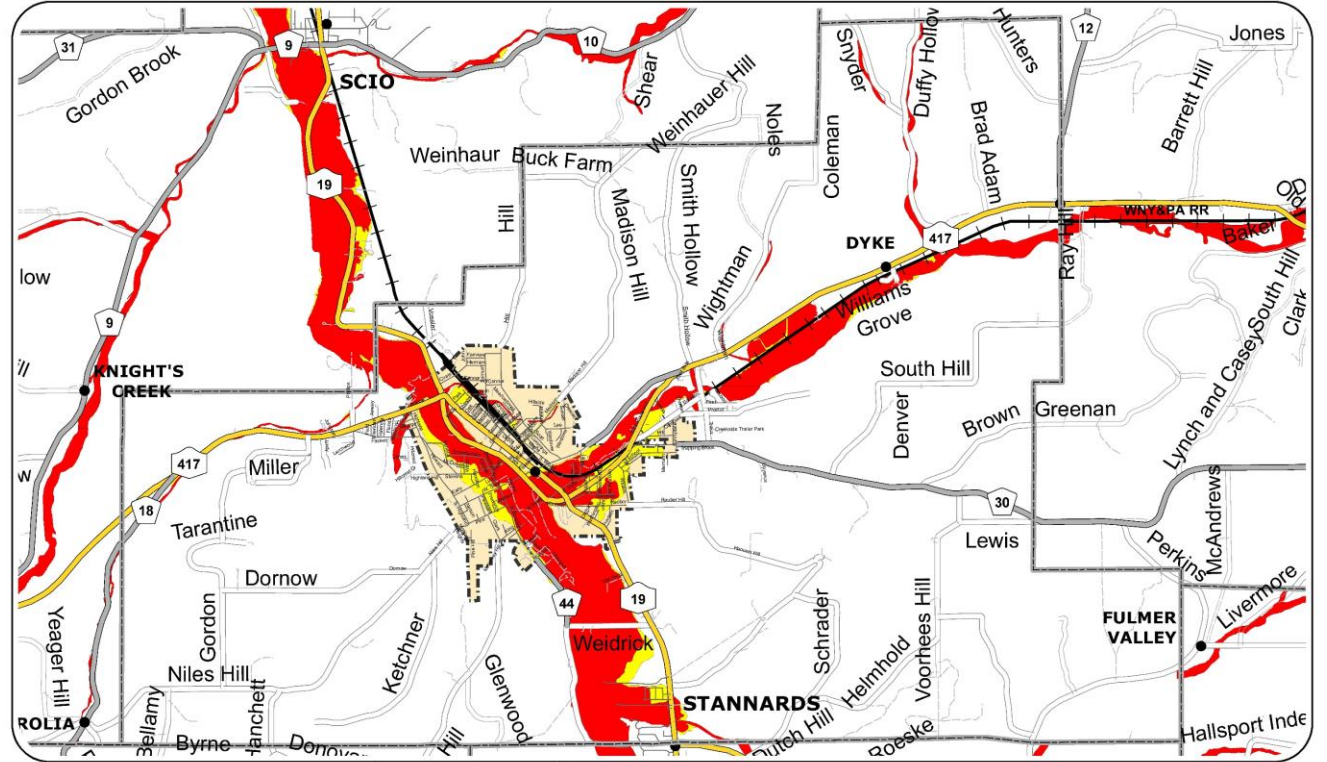
Hazard	Hazard Scoring			Hazard Score
	Probability	Spatial Threat	Magnitude	
Cold Wave	3	1	3	12
Drought	3	4	1	15
Earthquake	1	1	1	2
Hail	3	1	2	9
Heat Wave	1	2	1	3
Hurricane	1	4	3	7
Ice Storm	2	4	2	12
Landslide	2	1	1	4
Lightning	3	1	3	12
Flooding	4	3	4	28
Strong Wind	4	4	4	32
Tornado	3	4	4	24
Wildfire	1	4	1	5
Winter Weather	4	2	3	20

1. Scoring based out of total possible score of 32.
2. Scoring determined by equation: (Spatial Threat + Magnitude) x Probability.
3. Probability scoring metrics provided in Table 4.
4. Spatial Threat scoring metrics provided in Table 5.
5. Magnitude scoring metrics provided in Table 6.

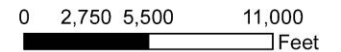
- FEMA is redoing the Flood Plain Mapping for Allegany County for the first time since the 1970s/early 1980's.
- This is being completed using modern computer modeling.

Town of Wellsville

Flood Plain Map



Note: Mapping provided by Allegany County Planning Department. Information is for general planning use only and not definitive. Contact Town or Village Clerk for more information or laws.



[Home](#)

[Who We Are](#)

[Contact Us](#)

[The Genesee River](#)

[Our Work](#) ▾

[Publications](#)

[Events](#)

[Get Involved](#)

[Donate](#)

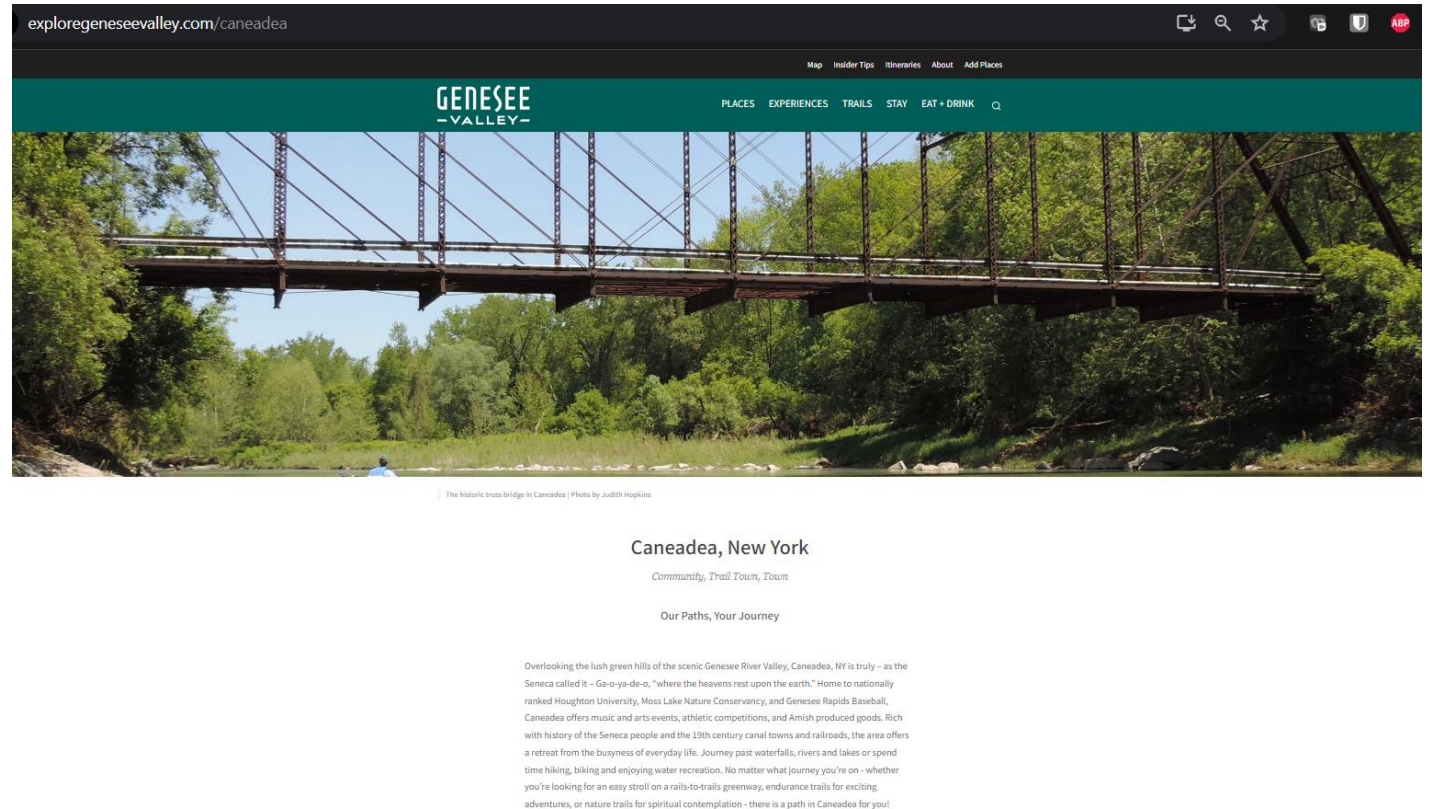
[Our Supporters](#)



Celebrating 50 Years of Environmental Leadership

Letchworth Gateway Villages

- Trail Towns Initiatives
- Exploregeneseevalley.com
- REDI Initiative





Current and Future Projects

- Update to the NYS Open Space Plan is currently underway. DEC and State Parks oversee the project with appointees from agencies and private groups work on this effort.
- Regions based on DEC Regions work on the local priorities.

Accomplishments



34,055

Acres Protected



7+

Miles of Public Trails



146

Conservation Projects



12,300+

Acres of Conservation
Projects in Progress



Current and Future Projects

The screenshot shows the website for the Black Creek-Angelica Creek Land Protection Program. At the top, there is a dark blue navigation bar with the Western New York Land Conservancy logo on the left, social media icons (Facebook, Instagram, Twitter, YouTube) in the center, and a green "DONATE" button on the right. Below the navigation bar, the main heading reads "THE BLACK CREEK-ANGELICA CREEK LAND PROTECTION PROGRAM" in white, bold, uppercase letters against a background image of a creek in a wooded area. The page content includes a map of the watershed, several paragraphs of text explaining the program's goals and how it works, and a photograph of a creek flowing through a field of tall grasses. At the bottom, there is a link to a news article from the Wellsville Sun.

WESTERN NEW YORK
LAND CONSERVANCY

f @ t y

DONATE

ABOUT SAVING LAND GET INVOLVED MEMBERSHIP & GIVING

THE BLACK CREEK-ANGELICA CREEK LAND PROTECTION PROGRAM

In Allegany County, large intact forests provide space for outdoor recreation as well as wildlife. The Land Conservancy works with interested landowners to conserve the rural character of the county by protecting water resources and forests and the services they provide to all residents.

The Black Creek-Angelica Creek Land Protection Program protects forests, fields, and farms in the towns of Allen, Angelica, Birdsall, Grove, and West Almond.

Portions of these towns fall within the Black Creek watershed, which provides drinking water for residents in these towns and the Village of Angelica. Black and Angelica creeks also flow all the way to Lake Ontario and are part of the Great Lakes system.


The Land Conservancy works with landowners in one of two ways. They may obtain (through sale or donation) the development rights of a property from a landowner, who still owns and uses the property. When the landowner sells the property or passes it on, the easement remains and protects the property from ever being developed. In the second way, landowners would sell or donate their land to the Land Conservancy, who would keep it permanently protected as a nature preserve.

The Land Conservancy is asking interested parties who own land in these five communities to fill out [this form](#) to get started with this program. Questions? Contact Marcus Rosten at mrosten@wnylc.org or via telephone: (716) 687-1225 ext. 118.

Participation in this program is completely voluntary.

[Read about the Black Creek-Angelica Creek Land Protection Program in the Wellsville Sun.](#)

A photograph showing a narrow creek flowing through a field of tall, dry grasses. The sky is overcast with grey clouds.


Friends of the Genesee Valley Greenway

DONATE

ABOUT ▾
JOIN ▾
VISIT ▾
MAPS
EVENTS ▾
HISTORY ▾
NEWS ▾
CONTACT

SEARCH...

GRAB YOUR COPY OF THE GREENWAYS ADVOCACY SUMMIT GAZETTE

Interactive Map
 Printable Map
 Foldable Map

DOWNLOAD

Upcoming Events



May 20, 2024

20

MAY 2024

MONDAY, MAY 20 | 12:00AM

GREENWAYS ADVOCACY SUMMIT

The Egg - Empire State Plaza



25

MAY 2024

SATURDAY, MAY 25 | 10:00AM

CANAL HISTORY: BELFAST - ORAMEL

Hughes Street, Belfast, NY



June 1, 2024 | Letchworth State Park, Parade Grounds | 3:00 to 7:30 PM

01

JUN 2024

SATURDAY, JUNE 1 | 3:00PM

NATIONAL TRAILS DAY / MEMBERSHIP PICNIC

Parade Grounds Picnic Area at Letchworth State Park



Current and Future Projects



GENESEE VALLEY GREENWAY STATE PARK ACTION PLAN

Table of Contents

EXECUTIVE SUMMARY6

CHAPTER 1 EXISTING CONDITIONS 14

SECTION 1.1 INTRODUCTION 14

SECTION 1.2 COUNTY SPECIFIC ASSESSMENTS..... 18

SECTION 1.3 GVG EXISTING CONDITIONS ASSESSMENT SUMMARY..... 33

CHAPTER 2 PROJECT RECOMMENDATIONS 37

SECTION 2.1 PROJECT PRIORITIZATION 38

SECTION 2.2 PRIORITY IMPROVEMENT PROJECTS 40

CHAPTER 3 HIGH IMPACT PROJECTS55

APPENDIX A PUBLIC INPUT 94

APPENDIX B CROSSWALK EVALUATIONS107

**APPENDIX C COMPREHENSIVE ACCESS PLAN FEATURES
AND TRAIL AMENITIES113**



Current and Future Projects

- WNY Wildway



THE WESTERN NEW YORK WILDWAY





Current and Future Projects – From 2023 CW Intended Use Plan
<https://efc.ny.gov/cw-iup>

Andover, Village of VILLAGE OF ANDOVER COLL, STP
\$20,228,000

Caneadea, Town of TOWN OF CANEADEA STP UP
[DISINFECTION] **\$1,800,000**

Canaseraga, Village of VILLAGE OF CANASERAGA PS
REHAB, STP REHAB **\$2,124,000**

Friendship, Town of FRIENDSHIP WWTP I/I CORR, STP UP
\$8,176,000

Wellsville, Village of VILLAGE OF WELLSVILLE STP
MOD/UP **\$21,000,000**

Livingston County Water and Sewer Authority
LAKEVILLE WWTP STP UP [NUTRIENT REMOVAL]
\$8,309,355

Livingston County Water and Sewer Authority
TOWNS OF AVON, LIVONIA, GENESEO, CONESUS
AND GROVELAND PS IMP **\$5,000,000**

Livingston County Water and Sewer Authority
VILLAGE STP, STP IMP [DISINFECTION/UV]
\$1,306,000

Nunda, Village of VILLAGE STP IMP
[DISINFECTION] **\$3,515,000**

Warsaw, Village of VILLAGE OF WARSAW SEW
REHAB, STP IMP **\$5,973,000**



Current and Future Projects – From 2023 CW Intended Use Plan
<https://efc.ny.gov/cw-iup>

- Monroe County NWQ DISTRICT #1 PS IMP [BUTTONWOOD PS] **\$12,985,000**
- Monroe County NWQ DISTRICT #1 PS IMP [ISLAND COTTAGE PS] **\$8,147,000**
- Monroe County NWQ DISTRICT #1 PS IMP [FLYNN ROAD PS] **\$7,638,000**
- Monroe County FRANK E. VANLARE WWTP SEW REHAB [24" SEWER ACROSS MAPLEWOOD PEDESTRIAN BRIDGE] **\$1,248,000**
- Monroe County FRANK E. VANLARE WWTP SEW REHAB **\$4,481,000**
- Monroe County FRANK E VANLARE WWTP STP IMP [SECONDARY CLARIFIER] **\$11,000,000**
- Monroe County FRANK E VANLARE WWTP STP IMP [AERATION IMPROVEMENTS] **\$15,245,000**

WQIP Applications are being accepted through the [Consolidated Funding Application](#) (CFA) until 4:00PM on July 31, 2024.

- Allegany County Soil and Water Conservation District
Salt Storage Facility for the **Town of Willing**
Allegany County Soil and Water Conservation District will construct a salt storage facility to cover an uncovered salt storage pile in the Town of Willing. This project will protect groundwater within a principal aquifer. Allegany Salt Storage **\$300,000.00**
- Allegany County Soil and Water Conservation District
Salt Storage Facility for the **Town of Belfast**
Allegany County Soil and Water Conservation District will construct a salt storage facility to cover an uncovered salt storage pile in the Town of Belfast. This project will protect groundwater within a principal aquifer. Allegany Salt Storage **\$400,000.00**

WQIP

- **Village of Mount Morris Salt Storage Facility**

The Village of Mount Morris will replace their undersized salt storage structure with a larger permanent structure next to the new DPW building and out of the floodplain. This project will protect a nearby creek and groundwater within a principal aquifer. Livingston Salt Storage **\$143,416.00**

- **Village of Nunda Village of Nunda Wastewater Treatment Improvements**

The Village of Nunda will replace aged equipment at its wastewater treatment facility including a generator, sludge dewatering equipment and aerobic digester blowers. This project will reduce nutrients entering Keshequa Creek and supports goals identified in the Genesee River Nine Element Clean Water Plan. Livingston Wastewater Treatment Improvement **\$532,136.00**



Current and Future Projects



[HOME](#)

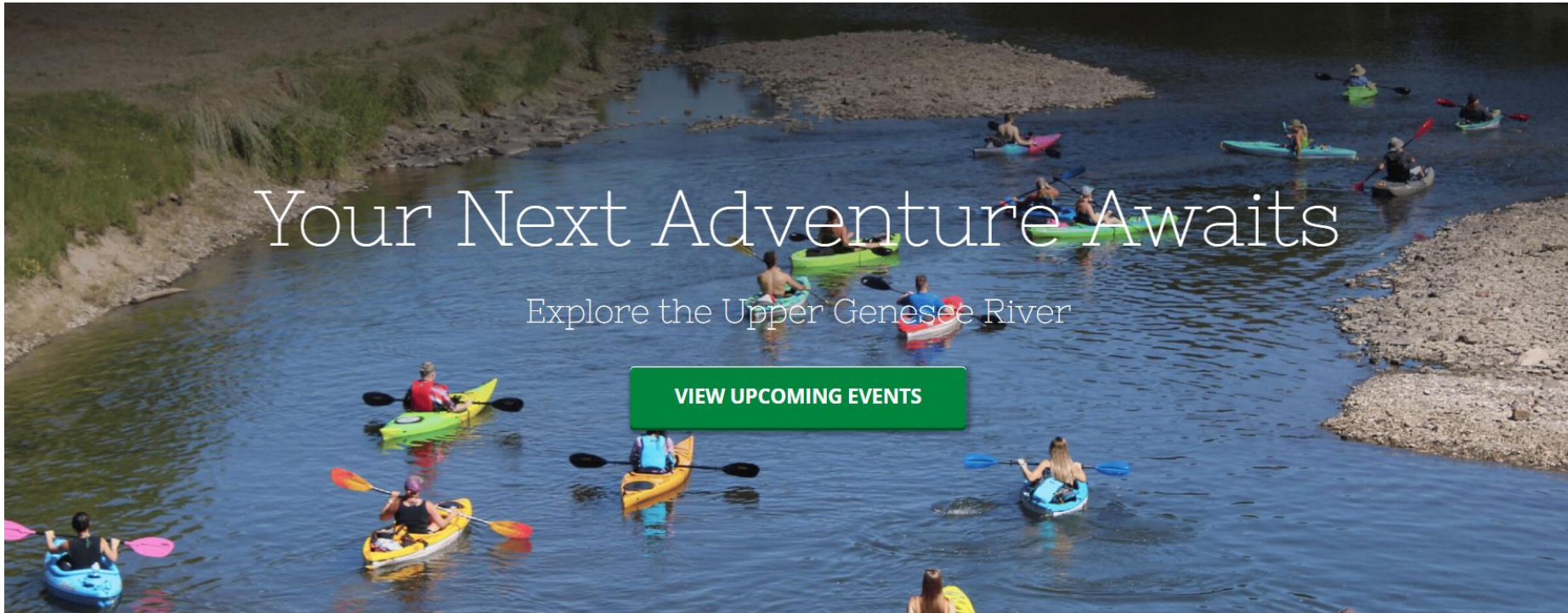
[RIVER ACCESS](#)

[ABOUT US](#)

[EVENTS](#)

[GET INVOLVED](#)

[RESOURCES](#)



Your Next Adventure Awaits

Explore the Upper Genesee River

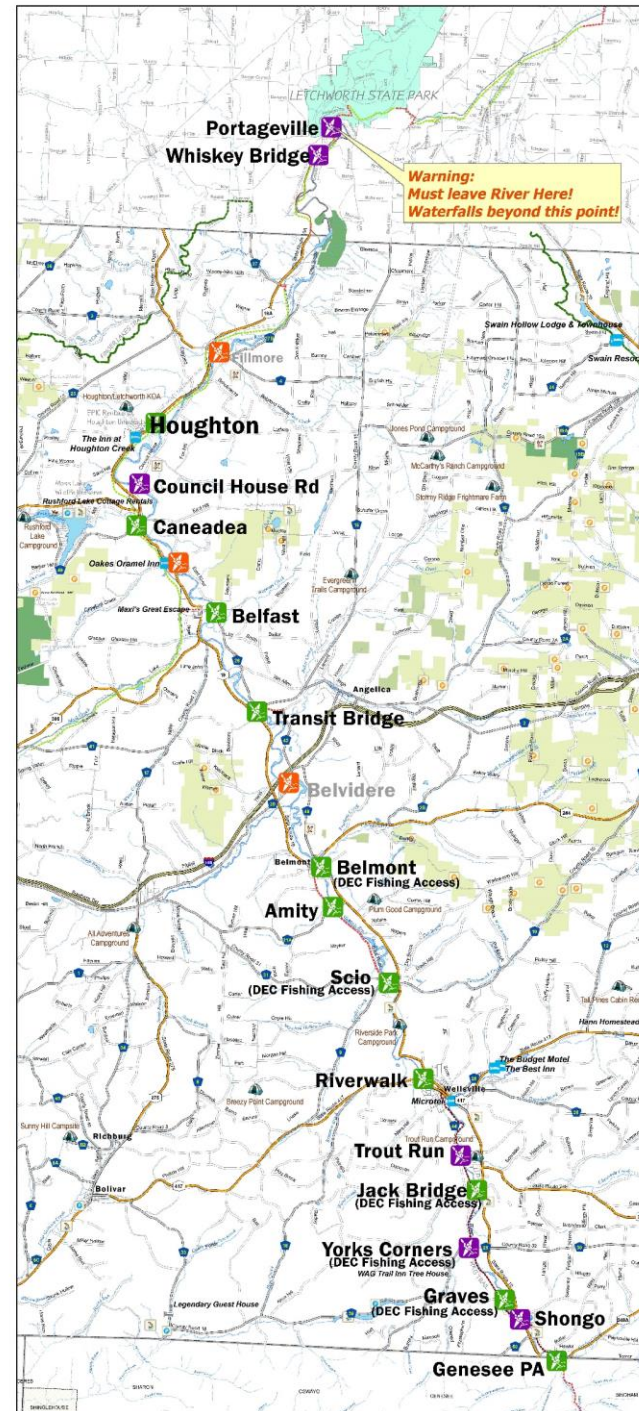
[VIEW UPCOMING EVENTS](#)



Current and Future Projects

Genesee River Wilds

- Officially incorporated in 2011
- No River Access officially along Genesee initially
- Now have 10 River Access sites officially open between
- Genesee, PA and Houghton, NY



www.geneseeriverwilds.com

The Genesee River is the only river that completely crosses New York State. The river begins as a spring in Gold, PA, located in the Allegheny Mountains and flows generally north 158 miles (254 km) to Lake Ontario.

Miles from place to place

Access Points	Distance Miles Starting Point	Cumulative Distance
Genesee PA - Town Park	2.44	2.44
Shongo - DEC Fishing Area	1.18	3.62
Graves - DEC Fishing Area	2.46	6.08
Yorks Corners - DEC Fishing Area	2.42	8.5
Jack Bridge - DEC Fishing Area	0.27	8.77
Trout Run Campground	0.46	9.23
Webb's Water Intake [CAUTION]	1.46	10.69
Island Park [CAUTION]	1.28	11.97
Riverwalk - Open	4.3	16.27
Scio - DEC Fishing Area	3.79	20.06
Amity - Open	1.4	21.46
Belmont Fire Hall [portage point WATERFALLS] - Open	3.9	25.36
Belvidere CR 20 Bridge - Not Open	4.1	29.49
Transit Bridge - Open	5.1	34.62
Belmont Access Park - Open	5.0	39.62
Caneadea Access Park - Open	1.8	41.39
Council House Bridge - No Sign	4.2	45.61
Houghton - Open	1.0	46.59
Lattice Bridge [Not Open]	2.7	49.24
Filmore CR 4 Bridge - Currently Closed	6.2	55.43
County Line [No Marker/Parking]	3.3	58.77
Whiskey Bridge - No Sign	3.4	62.17
Portageville Bridge [Get Out! Waterfalls Ahead! Letchworth Park ahead]		62.17
TOTAL MILES ON UPPER GENESSEE		62.17

Legend

- Developed Access Point
- Non-Official Access Point
- Proposed Access Point
- Campgrounds 2024
- Bed & Breakfasts 2024
- Hotel & Motels 2024
- Streams
- Allegheny County Forests
- Larger Lakes & Ponds
- State Forest
- Trailway
- Wildlife Management



Current and Future Projects

- WNY Wilds Brand – www.wnywilds.com
- Replaced the Discover Allegany County due to confusion with the name of Allegany.
- Allegany State Park, Allegheny River, Allegany County MD, Allegheny County PA, Town and Village of Allegany, NY, etc



Current and Future Projects



[Guides & Maps](#) [Events](#) [Blog](#)



EXPLORE ▾

GO WILD ▾

STAY ▾

LIVE ▾

GOOD EATS ▾

Live Deliberately

If you've felt that longing in your soul to strike out of your routine, breathe fresh air, and live with purpose once again, it's time for your next escape to the **Western NY Wilds**. Whether you're seeking to nourish your creativity, find your next adventure, or just enjoy our peace and quiet, we invite you to **live deliberately** with us on your next visit.





That was Too Many Things to think about.....

Kier Dirlam
Director of Planning [and other things]
585-268-7472
Kier.Dirlam@alleganyco.gov