



GENESEE RIVER WILDS

Program & Projects:
Who we are and what we do



Rebecca Rowley
Executive Director

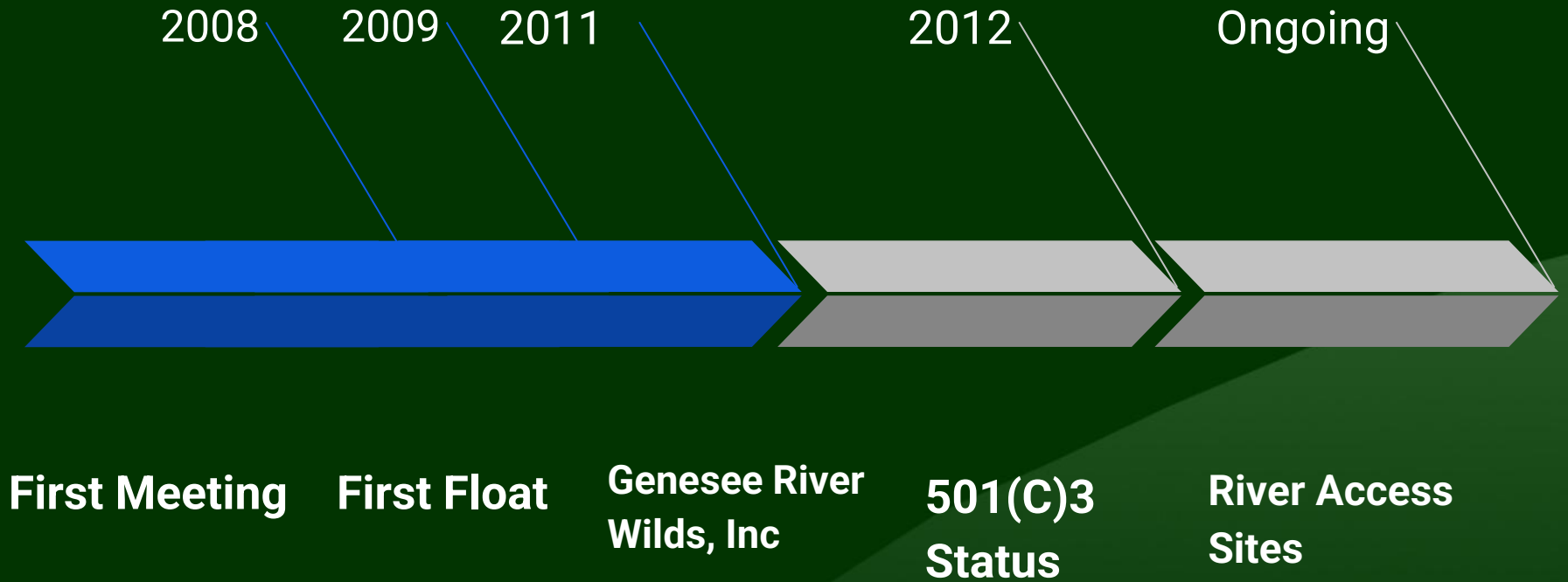


Mission:

- Our Mission is to restore, protect and enjoy the upper Genesee River by combining conservation, recreation and business.



Organization Timeline

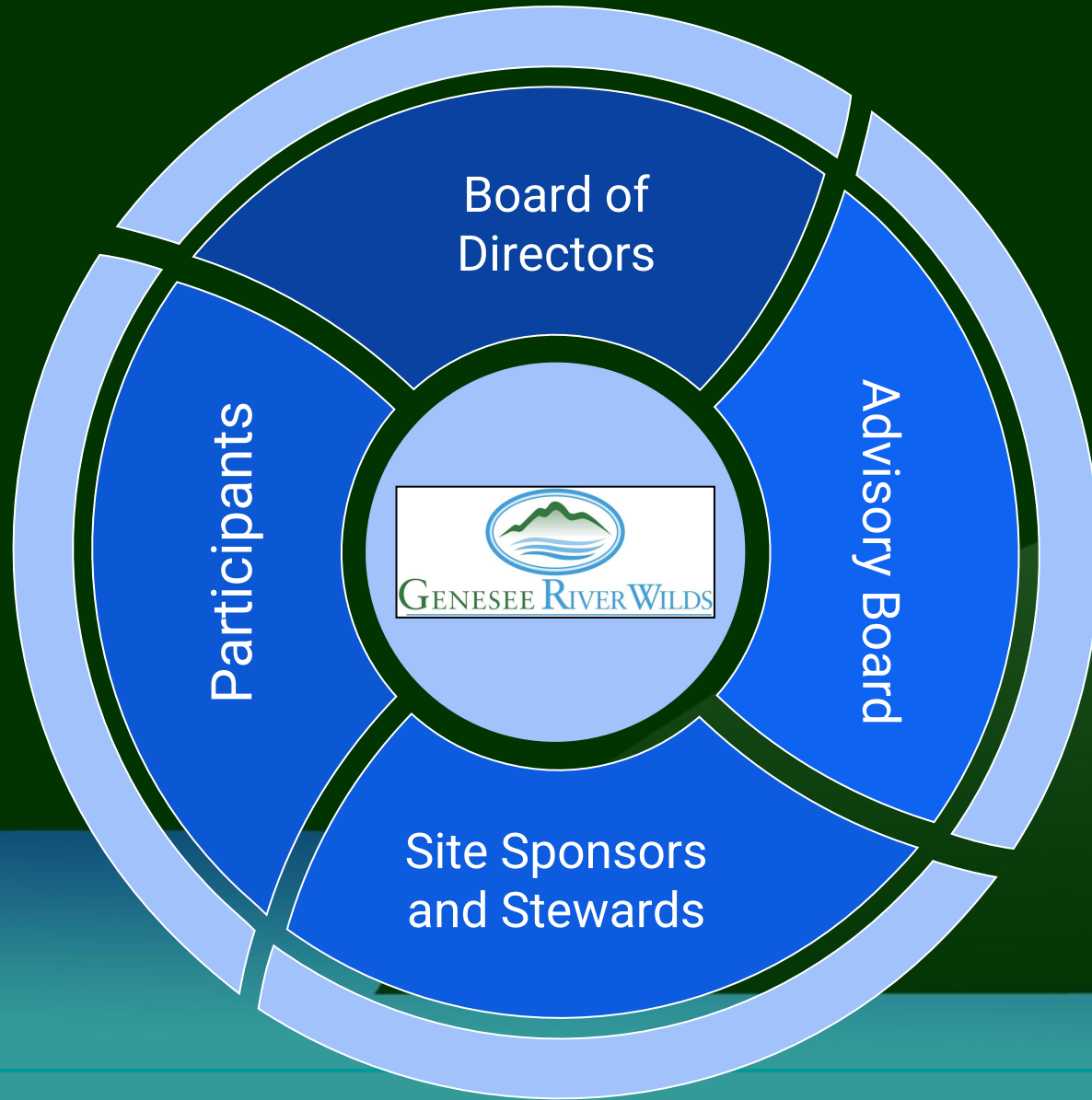


Role of Genesee River Wilds

- To improve/create new access points on the River.
- To advocate for sustainable ecological health of the Genesee river and surrounds
- To assist existing efforts with regional geotourism development and promotion:
 - Genesee Valley Greenway
 - Allegany Trails – Upper Genesee Trail [WAG]
 - Finger Lakes Trail
 - Local Outfitters
 - Conservation Agencies
 - Tourism Promoters



Organizational Structure



Partners and Other Groups

- Genesee Valley Conservancy
- Genesee Valley Greenway/FOGVG
- Letchworth Gateway Villages/
Explore Genesee Valley
 - Trail Towns
 - Allegany County
 - Southern Tier West
 - Houghton University/EPIC
Adventures
 - Local Businesses
 - Swiftwater/Emergency Services
 - DEC





www.geneseeriverwilds.com

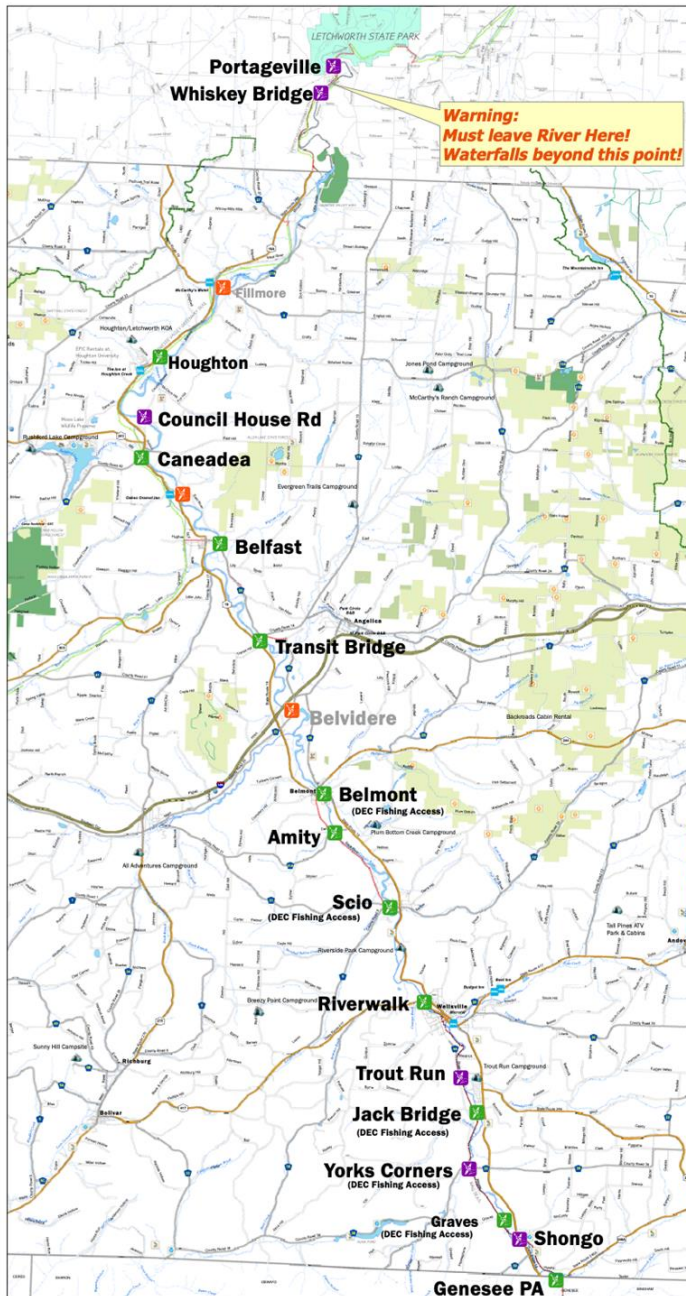
The Genesee River is the only river that completely crosses New York State. The river begins as a spring in Gold, PA, located in the Allegheny Mountains and flows generally north 158 miles

Miles from place to place

Access Points	Distance Miles	Cumulative Distance
Genesee PA - Town Park	Starting Point	0
	2.44	2.44
Shongo - DEC Fishing Area	1.18	3.62
Graves - DEC Fishing Area	2.46	6.08
Yorks Corners - DEC Fishing Area	2.42	8.5
Jack Bridge - DEC Fishing Area	0.27	8.77
Trout Run Campground	0.46	9.23
Wellsville Water Intake [CAUTION]	1.46	10.69
Island Park [CAUTION]	1.28	11.97
Riverwalk - Open	2.44	14.41
Riverside Campground - Open	1.86	16.27
Scio - DEC Fishing Area	3.79	20.06
Amity - Open	1.4	21.46
Belmont Fire Hall [portage point WATERFALLS] - Open	3.9	25.36
Belvidere CR 20 Bridge - Not Open	4.1	29.49
Transit Bridge - Open	5.1	34.62
Belfast Access Park - Open	5.0	39.62
Caneadea Access Park - Open	1.8	41.39
Council House Bridge - No Sign	5.2	46.59
Lattice Bridge [Not Open]	2.7	49.24
Fillmore CR 4 Bridge - No Sign	6.2	55.43
County Line [No Marker/Parking]	3.3	58.77
Whiskey Bridge - No Sign	3.4	62.17
Portageville Bridge [Get Out!!! Waterfalls Ahead] Letchworth Park ahead		62.17
TOTAL MILES ON UPPER GENESEE ----->		62.17

Legend

- Developed Access Point
- Non-Official Access Point
- Proposed Access Point
- Campgrounds
- Bed and Breakfasts
- Hotel & Motels
- Streams
- Allegany County Forests
- State Forest
- Trailway
- Wildlife Management

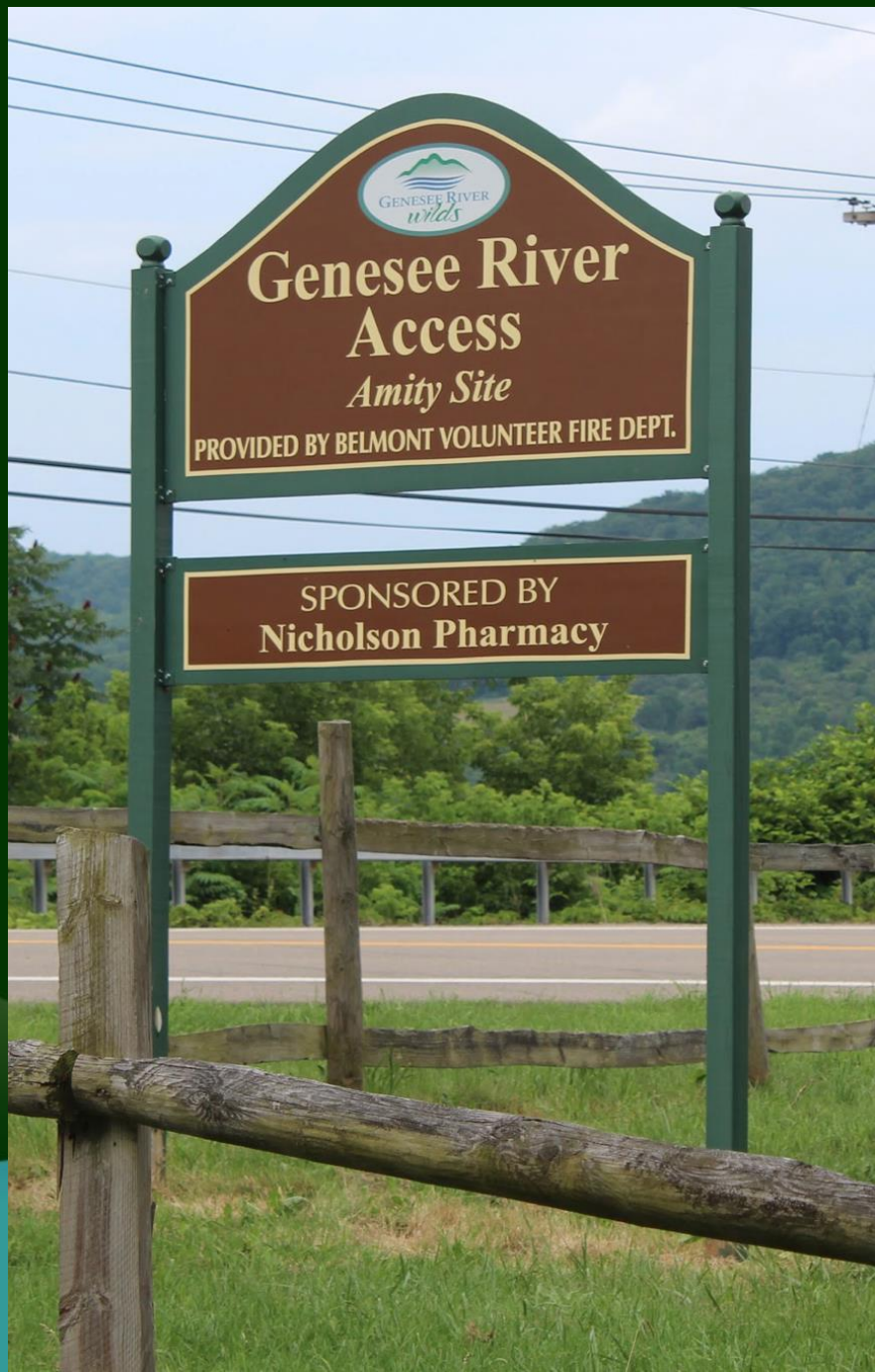


Wellsville Access Site



Wellsville Riverwalk Access Site





Amity Access Site



Transit Bridge Access Site





Transit Bridge Access Site



Caneadea Access Site





Caneadea Access Site



Portageville Access Site



Friends of the
Genesee Valley Greenway

Future Plans/Dreams:

- Stewardship Program
- Triathlon
- Themed Guided Floats (i.e. birding, historical, geology, etc)
- Flyfishing Clinics
- Camping/amenities
- Kayak Safety Classes
- Collaboration with Regional Geotourism Initiatives

Get Involved!

- Annual Float: June 1 10am launch
- Site Sponsor
- Site Steward
- Donate
- Recreate!





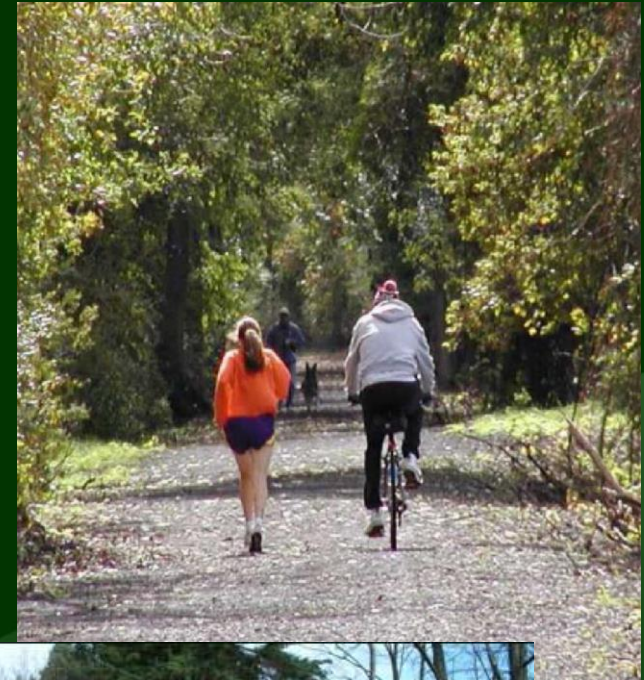
GENESEE RIVER WILDS

Thank you!



Phase 1- Improve Existing Facilities

- On existing trails like the Greenway and the WAG trail, we will improve:
 - a. More signs
 - b. More parking areas
 - c. More infrastructure
 - d. Better surfaces for bicycle trails
 - e. Improved launches for Kayaks and Canoes



Phase 2- Construct New Facilities

- Creating a new “pocket park” consists of kayak and canoe launches, signs, parking lots and complementary infrastructure.
- This can best be accomplished by building near bridges and public sites.



Phase 3- Add Trails

- First we will add existing trails to the Existing Systems.
- Then in the few short sections of the 230 mile long system that do not have trails, trails can be created using old railroad beds and other existing infrastructure.

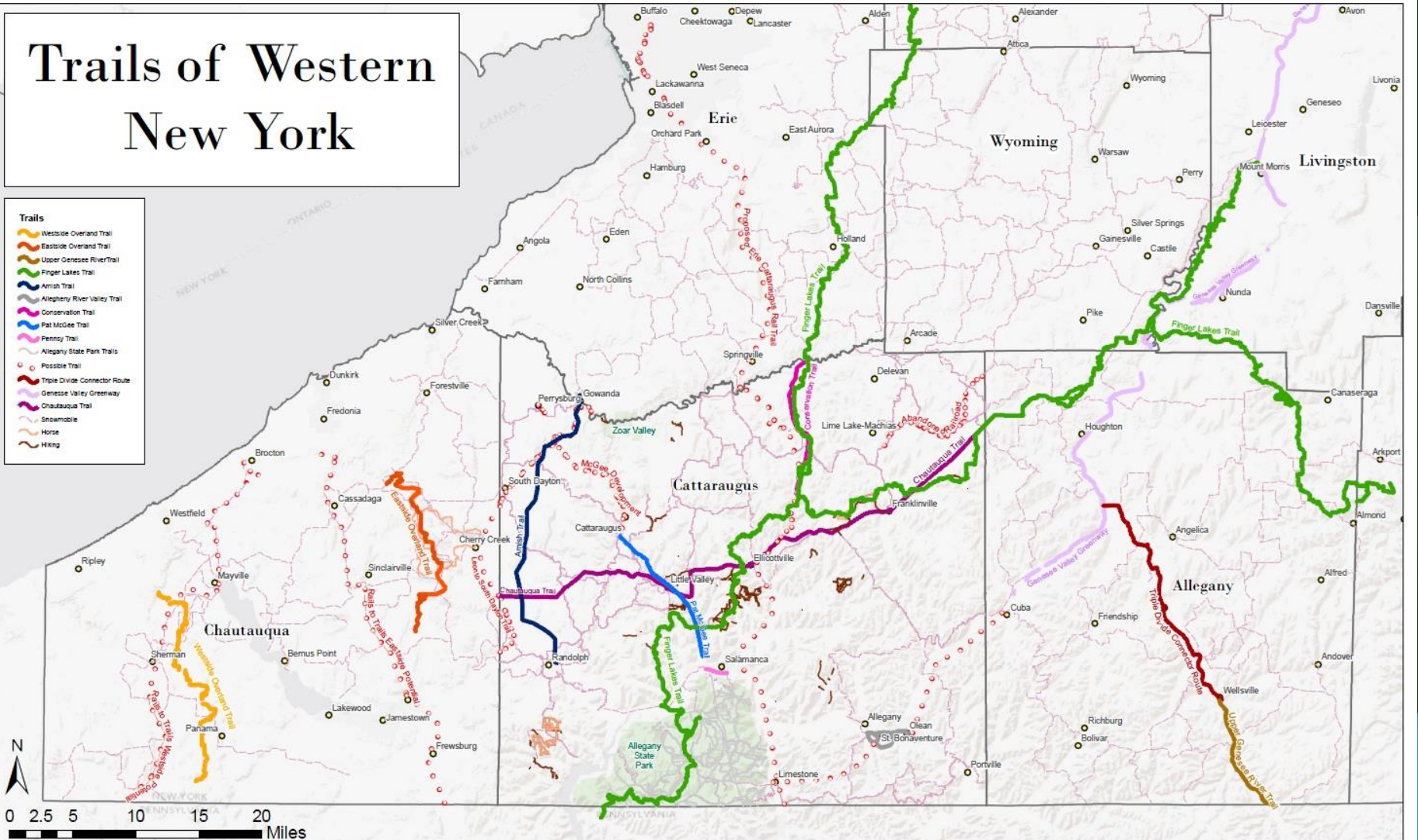


WNY Greenway System

Trails of Western New York

Trails

-  Westside Overland Trail
-  Eastside Overland Trail
-  Upper Genesee River Trail
-  Finger Lakes Trail
-  Amish Trail
-  Allegheny River Valley Trail
-  Conservation Trail
-  Pat McGee Trail
-  Pennsy Trail
-  Allegheny State Park Trails
-  Possible Trail
-  Triple Divide Connector Route
-  Genesee Valley Greenway
-  Chautauque Trail
-  Snowmobile
-  Horse
-  Hiking



Phase 4- Add Parks

- By adding a forested streamside park, we will help to protect the river and provide jobs, eco-tourism and facilities for environmental education (camping shelters, restrooms, pavilions, signs, wildlife-viewing platforms, and educational kiosks).

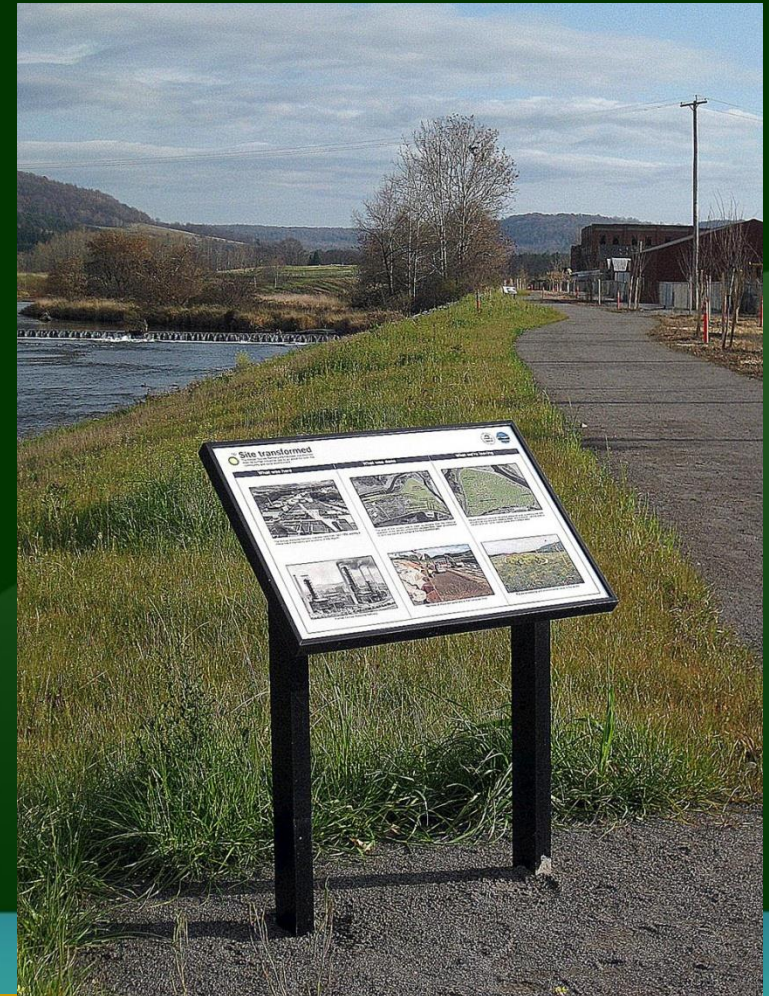


Phase 5- Ecological Improvements

- We will continue to add trees as a buffer along the Genesee River and Pine Creek.
- By adding these buffers along the rivers, industrial toxins, costly flooding and risk of overuse will be reduced.

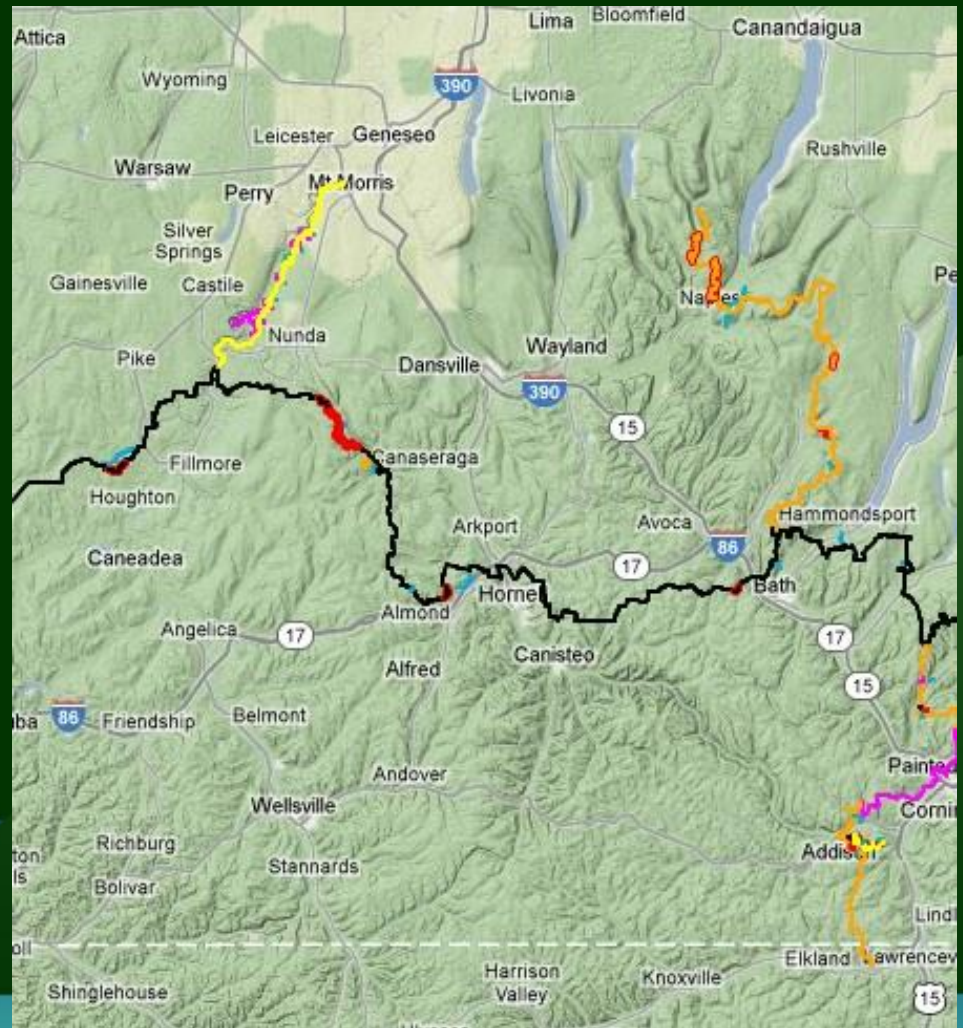


Allegheny Trails - Upper Genesee River Trail - Wellsville



Finger Lakes Trail

- Walking Trail system extending across NYS.



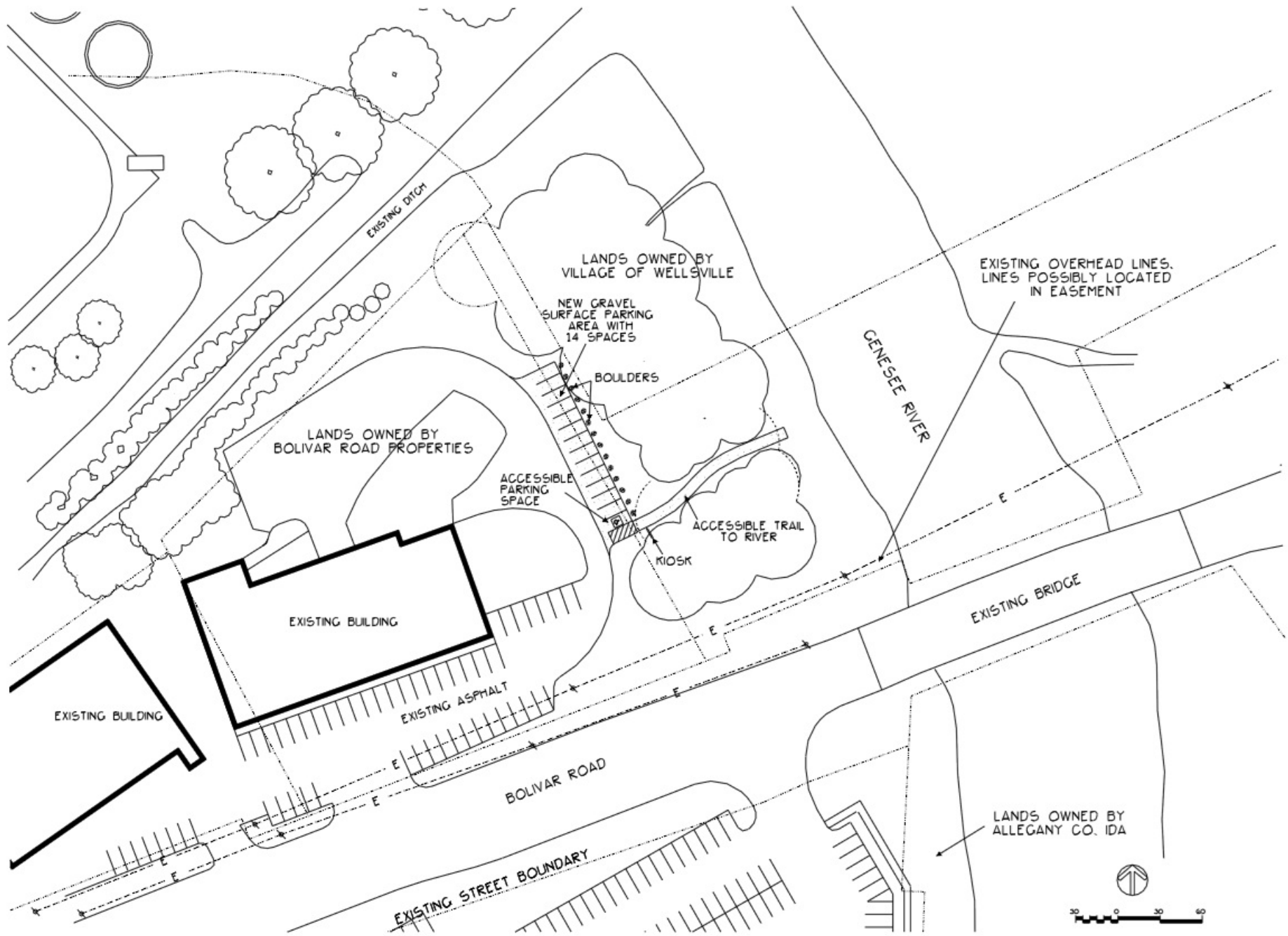
Parks Development - Willing



Willing –
Shongo area



Willing –
Stannards area



EXISTING DITCH

LANDS OWNED BY VILLAGE OF WELLSVILLE

NEW GRAVEL SURFACE PARKING AREA WITH 14 SPACES

BOULDERS

LANDS OWNED BY BOLIVAR ROAD PROPERTIES

ACCESSIBLE PARKING SPACE

ACCESSIBLE TRAIL TO RIVER

KIOSK

EXISTING OVERHEAD LINES. LINES POSSIBLY LOCATED IN EASEMENT

GENESEE RIVER

EXISTING BRIDGE

EXISTING BUILDING

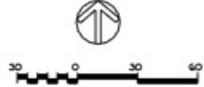
EXISTING BUILDING

EXISTING ASPHALT

BOLIVAR ROAD

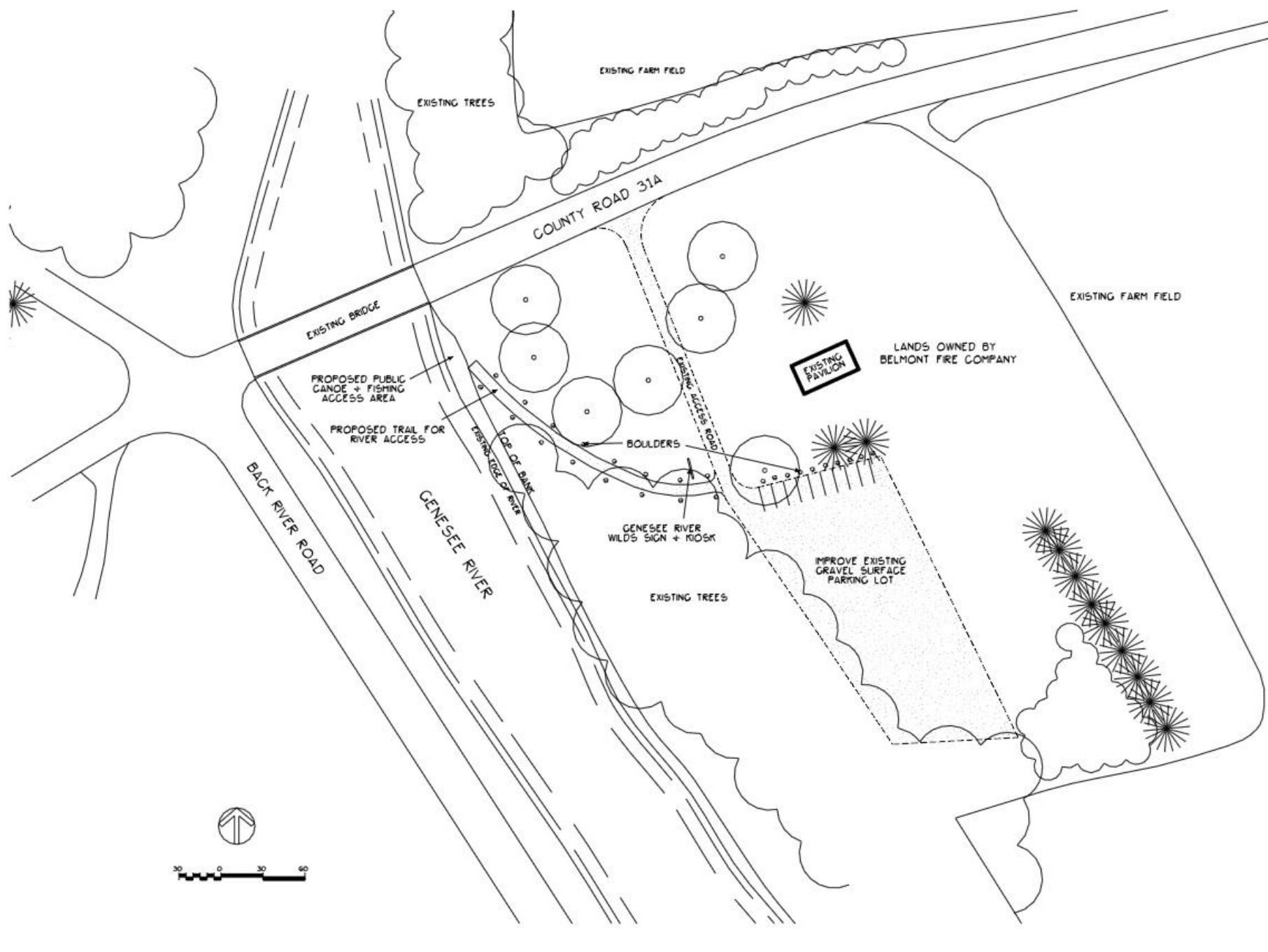
EXISTING STREET BOUNDARY

LANDS OWNED BY ALLEGANY CO. IDA



Parks Development – Belmont 1





EXISTING FARM FIELD

EXISTING TREES

COUNTY ROAD 31A

EXISTING BRIDGE

EXISTING FARM FIELD

PROPOSED PUBLIC CANOE + FISHING ACCESS AREA

EXISTING PAVILION

LANDS OWNED BY BELMONT FIRE COMPANY

PROPOSED TRAIL FOR RIVER ACCESS

Boulders

IMPROVE EXISTING GRAVEL SURFACE PARKING LOT

BACK RIVER ROAD

GENESEE RIVER

GENESEE RIVER WILDS SIGN + KIOSK

EXISTING TREES

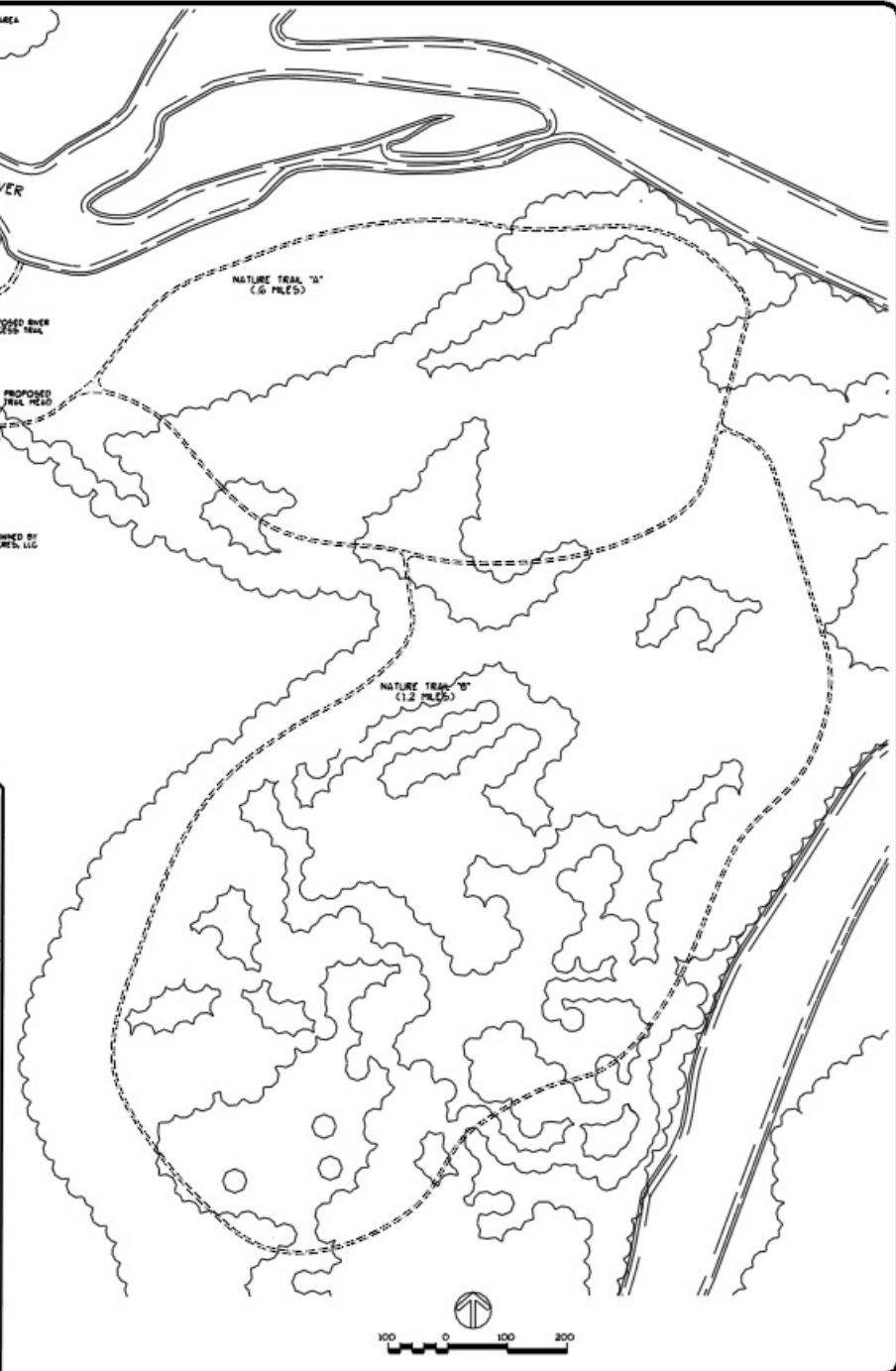
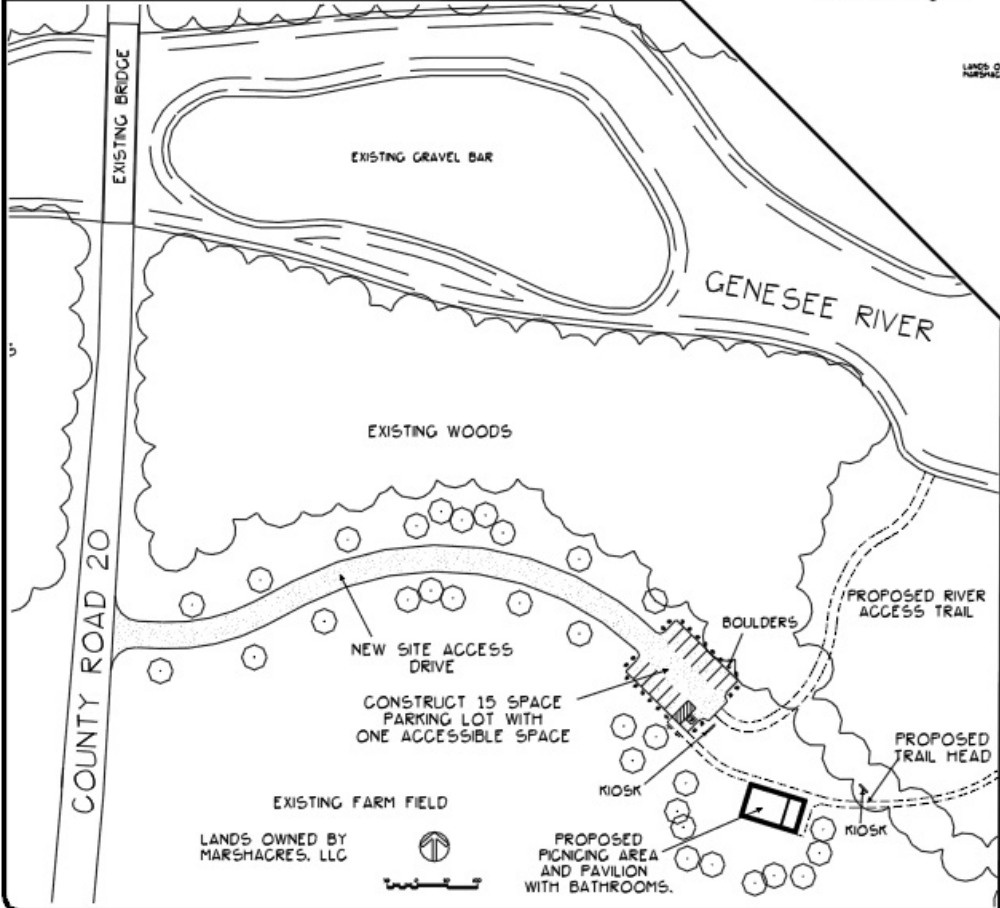
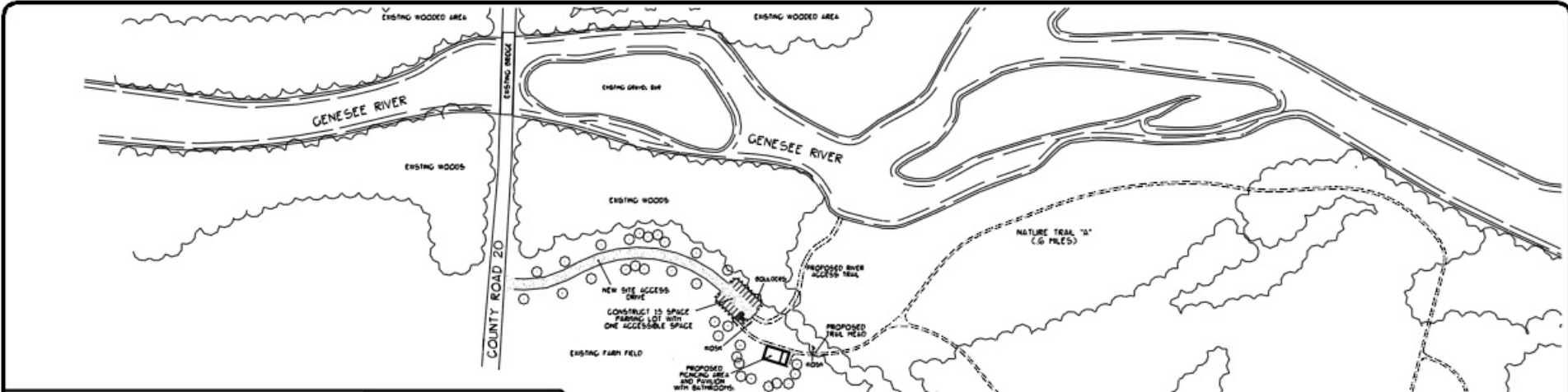


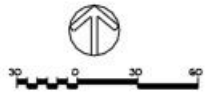
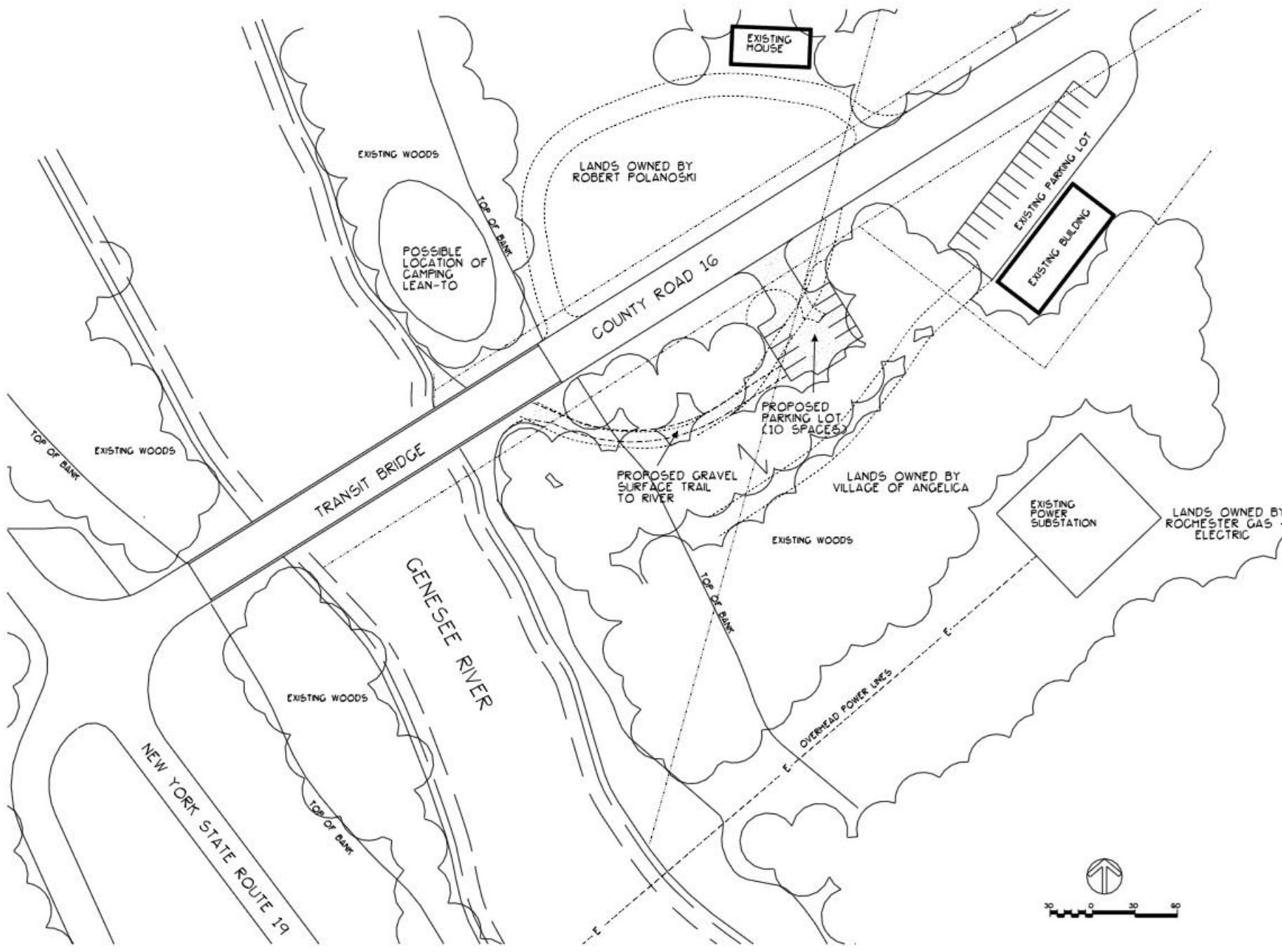
Parks Development – Belmont 2



Parks Development - Belvidere







Parks Development - Belfast



EXISTING HOUSE

EXISTING HOUSE

COUNTY ROAD 26

EXISTING BRIDGE

RIVER ROAD

EXISTING HOUSE

EXISTING HOUSE

GENESEE RIVER

LANDS OWNED BY TOWN OF BELFAST

EXISTING TREES

TOP OF BANK

CONSTRUCT 12 SPACE PARKING LOT WITH ONE ACCESSIBLE SPACE

BOULDERS

NEW TREES

COUNTY ROAD 26

EXISTING FLAT GRAVEL SHORE FOR RIVER ACCESS

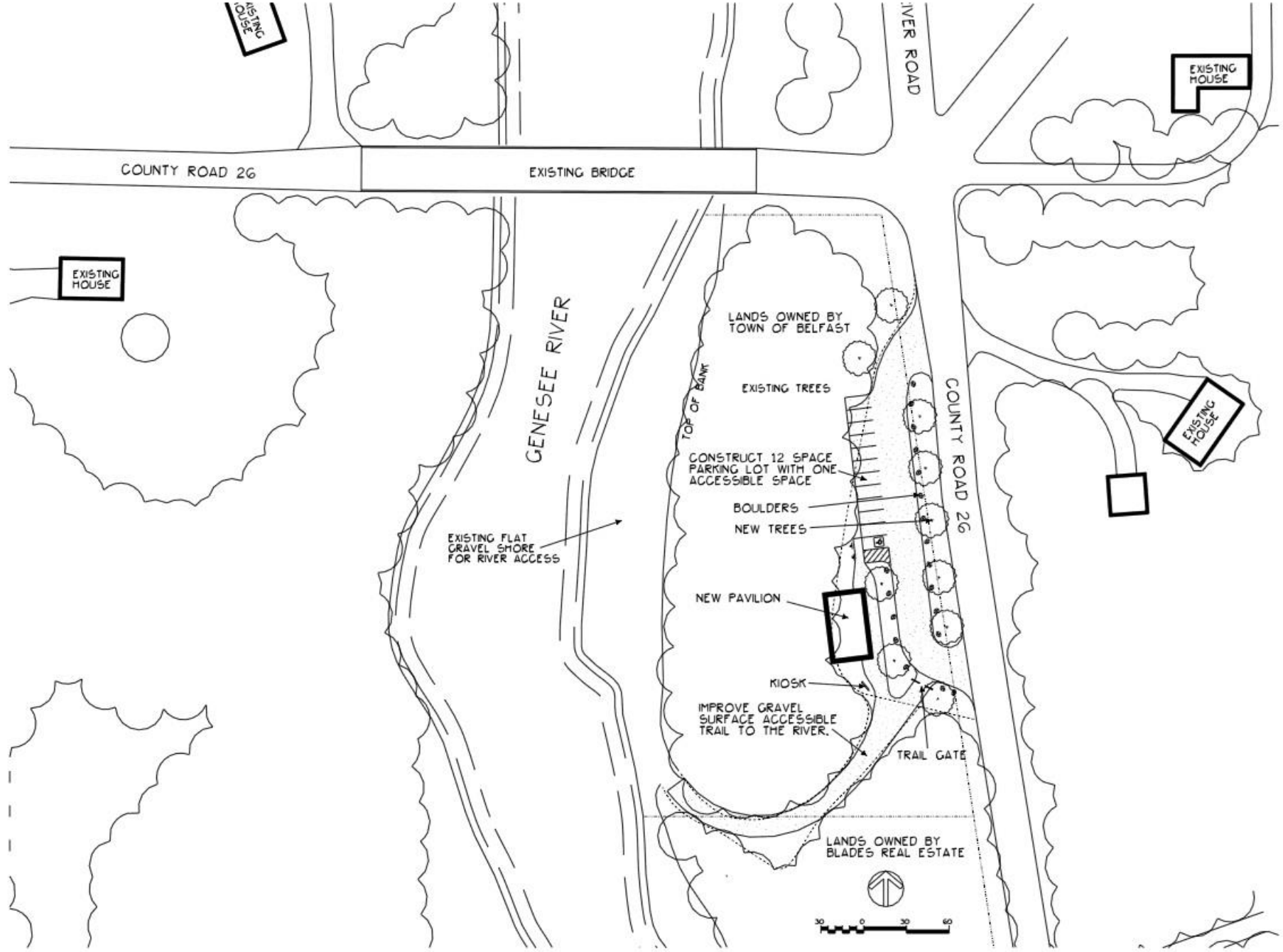
NEW PAVILION

KIOSK

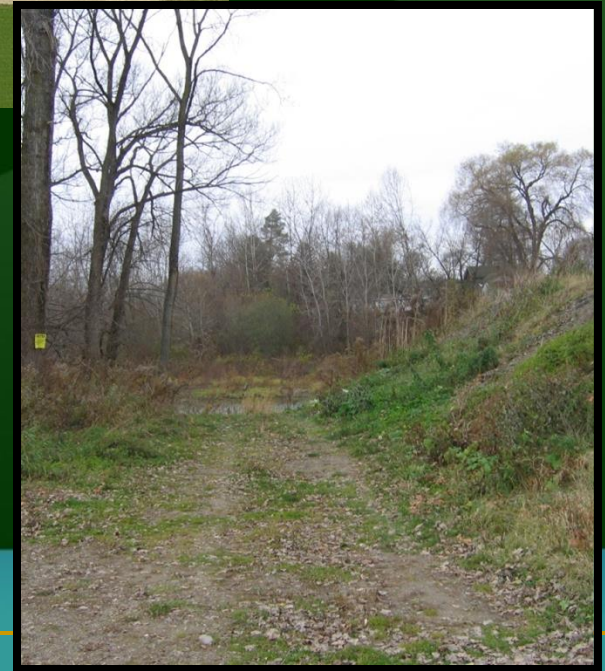
IMPROVE GRAVEL SURFACE ACCESSIBLE TRAIL TO THE RIVER.

TRAIL GATE

LANDS OWNED BY BLADES REAL ESTATE



Parks Development – Caneadea 1



LANDS OWNED BY
WILLIAM J. TUCKER

LANDS OWNED BY
GERALD C. LENDEL

LANDS OWNED BY
DONNA STAUFENBERGER

RIVER ACCESS SITE 'A'

ACQUIRE EXISTING RESIDENTIAL
PROPERTY WITH ABANDONED
HOUSE. REMOVE EXISTING
HOUSE AND CLEAN UP THE SITE.
INSTALL NEW GRAVEL SURFACE
PARKING LOT (12 SPACES).

LANDS OWNED BY
CHARLES BABBITT, ETAL

EXISTING GRAVEL
COVERED ACCESS ROAD
TOP OF BANK

COUNTY ROAD 46

BOULDERS

TOP OF BANK

KIOSK

ACQUIRE EASEMENT FROM
THE PROPERTY OWNERS FOR
RIVER ACCESS. IMPROVE THE
EXISTING TRAIL SURFACE.
CONSIDER USING THIS SITE FOR
OVERNIGHT CAMPING FOR CANOERS.

EXISTING FLATE PLANE
AT RIVER LEVEL

GENESSEE RIVER

TOP OF BANK

TOP OF BANK

EXISTING BRIDGE

IMPROVE EXISTING
RIVER ACCESS

EXISTING GRAVEL SURFACE ROAD

KIOSK

BOULDERS

TOP OF BANK

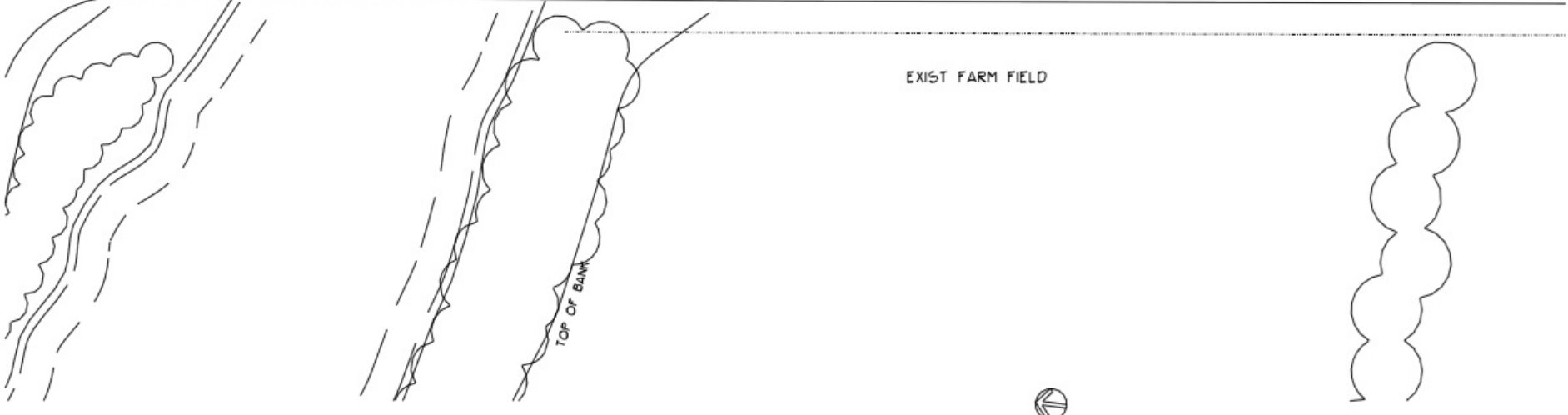
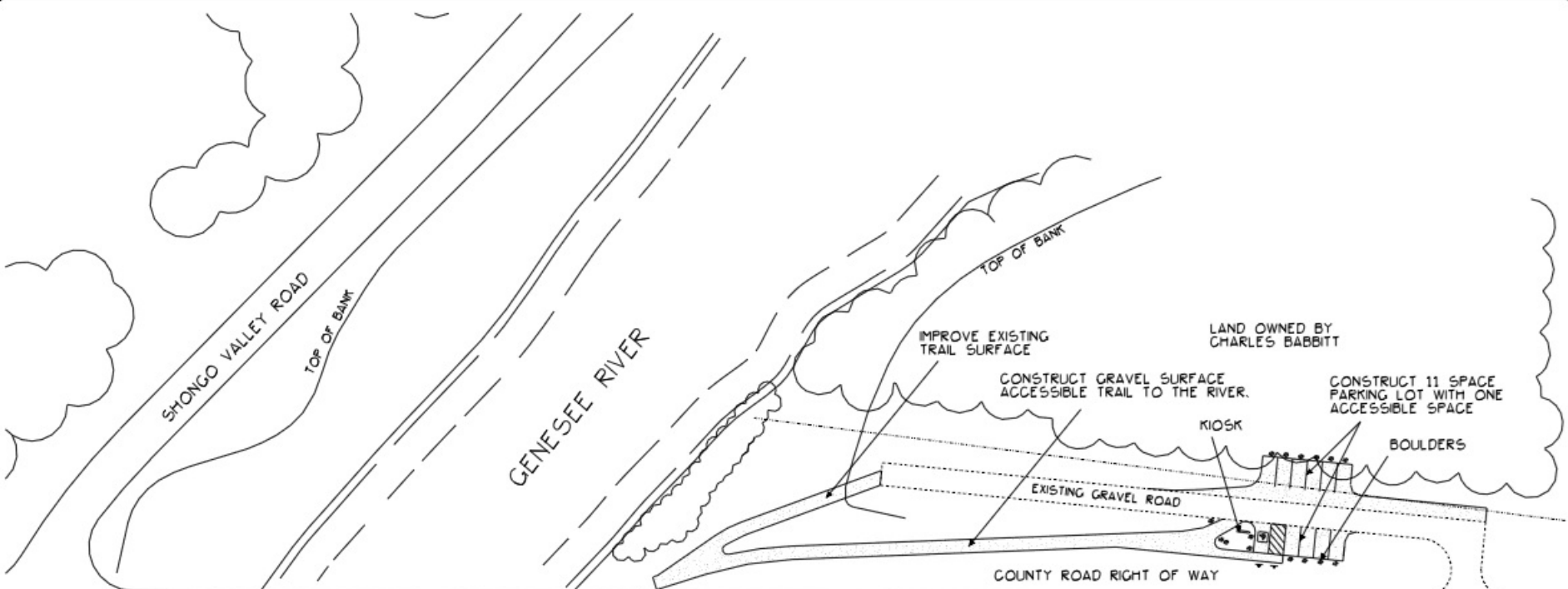
RIVER ACCESS SITE 'B'

ACQUIRE EASEMENT FROM
PROPERTY FOR RIVER ACCESS

INSTALL 8 SPACE
PARKING AREA

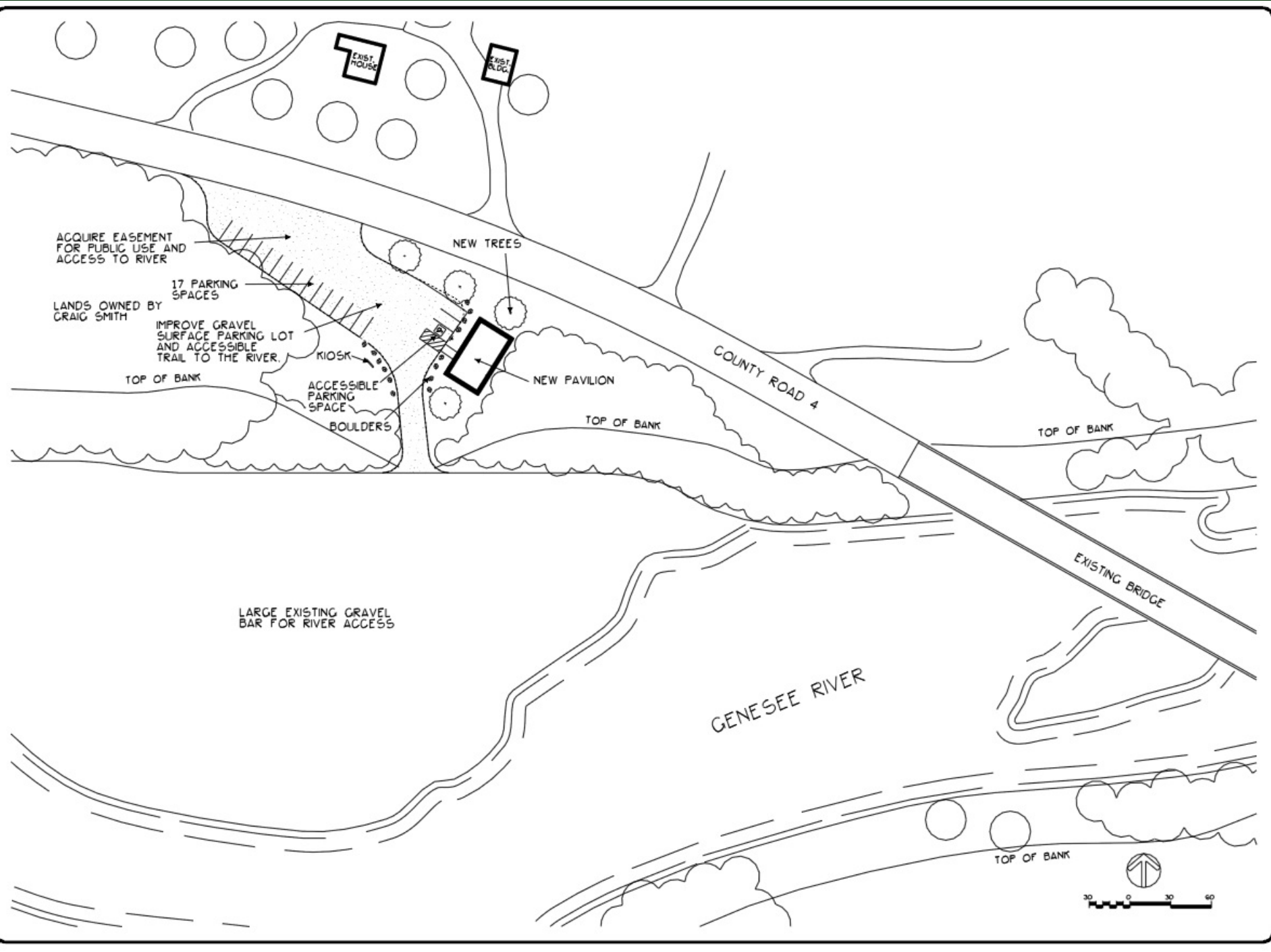
LANDS OWNED BY
MARSHACRES, LLC





Parks Development - Fillmore





EXIST. HOUSE

EXIST. BLDG.

ACQUIRE EASEMENT FOR PUBLIC USE AND ACCESS TO RIVER

LANDS OWNED BY CRAIG SMITH

17 PARKING SPACES

IMPROVE GRAVEL SURFACE PARKING LOT AND ACCESSIBLE TRAIL TO THE RIVER.

TOP OF BANK

KIOSK

ACCESSIBLE PARKING SPACE

BOULDERS

NEW TREES

NEW PAVILION

NEW PAVILION

TOP OF BANK

COUNTY ROAD 4

TOP OF BANK

EXISTING BRIDGE

LARGE EXISTING GRAVEL BAR FOR RIVER ACCESS

GENESEE RIVER

TOP OF BANK



Thanks and have a great Night!

